

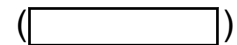


PARTS CATALOGUE

LNS125 (BF43) MALAYSIA



1VBF4-440E1



LNS125
PARTS CATALOGUE
©2019 by Yamaha Motor Co., Ltd.
1st edition, October 2019
All rights reserved.
Any reprinting or unauthorized use
without the written permission of
Yamaha Motor Co., Ltd.
is expressly prohibited.
Printed in Japan.

FOREWORD

This Parts Catalogue is related to the parts for the model(s) on the cover page. When you are ordering replacement parts, please refer to this Parts Catalogue and quote both part numbers and part names correctly.

1. Modifications or additions which have been made after the issue of the Parts Catalogue will be announced in the Parts News.
It is advisable that you make the necessary corrections to the Parts Catalogue according to the Parts News.

2. Abbreviations

The following abbreviations are used in this Parts Catalogue.

“UR” Use specified parts number.

“UN” Use as many as needed.

“AP” Alternate Parts

“LM” Locally Made (Parts need to be ordered locally)

“F#” Frame No. (Applicable machine No.)

“O/S” Over Size

3. The number of components for assembly

- Parts, which are to be supplied in an assembly, are listed with a dot (.) in front of the part name as shown below.
- The numeral appearing to the right of each component part indicates the quantity of parts for each assembly unit.

PART NO.	DESCRIPTION	Q'TY	REMARKS
2F5-83310-60	FRONT FLASHER LIGHT ASSY	2	
115-83311-60	.BULB (6V-18W)	1	

4. Applicable colours of graphics are represented in the “REMARKS” as shown below.

PART NO.	DESCRIPTION	Q'TY	REMARKS
2N4-24110-00-X5	FUEL TANK COMP.	2	MXR
3J1-24240-10	.GRAPHIC, FUEL TANK	1	FOR MXR

5. Note that the illustrations for reference in finding parts numbers are not to be used for assembling. When assembling, please use the applicable service manual.

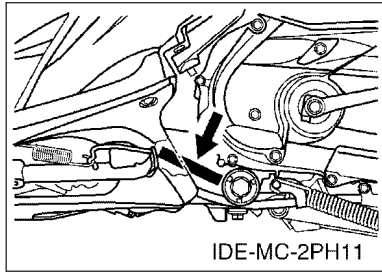
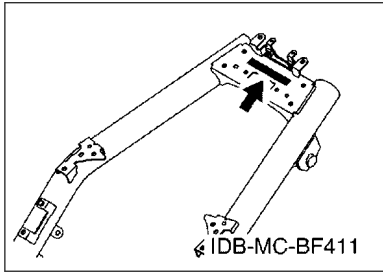
6. The asterisk (*) before a reference number indicates modified items after the first edition.

FOREWORD

7. Applicable Serial No.

Frame Serial No.

Engine Serial No.



8. Applicable Colour Code (The (*) mark shows Model colour.)

Abbreviation	Colour Name	Colour Code
CM6(*)	CYAN METALLIC 6	1344
LYNM9(*)	LIGHT YELLOWISH GRAY ME 9	0752
MBL2	MAT BLACK 2	0582
MS1	MAT SILVER 1	1160
RM7(*)	RED METALLIC 7	1218
SMX	BLACK METALLIC X	0903
VPBC5(*)	VIVID PURPLISH BLUE COCKTAIL 5	1177
YB	YAMAHA BLACK	0033

9. Applicable Starting Serial No.

Frame Serial No.

Serial No.	Name Of Q'ty Column	Model Code

Engine Serial No.

Serial No.	Name Of Q'ty Column	Model Code

CONTENTS

ENGINE

CYLINDER.....	1
CRANKSHAFT & PISTON.....	2
VALVE.....	3
CAMSHAFT & CHAIN.....	4
AIR SHROUD & FAN.....	5
OIL PUMP.....	6
INTAKE.....	7
EXHAUST.....	9
CRANKCASE.....	10
CRANKCASE COVER 1.....	12
STARTER.....	13
CLUTCH.....	14
TRANSMISSION.....	16

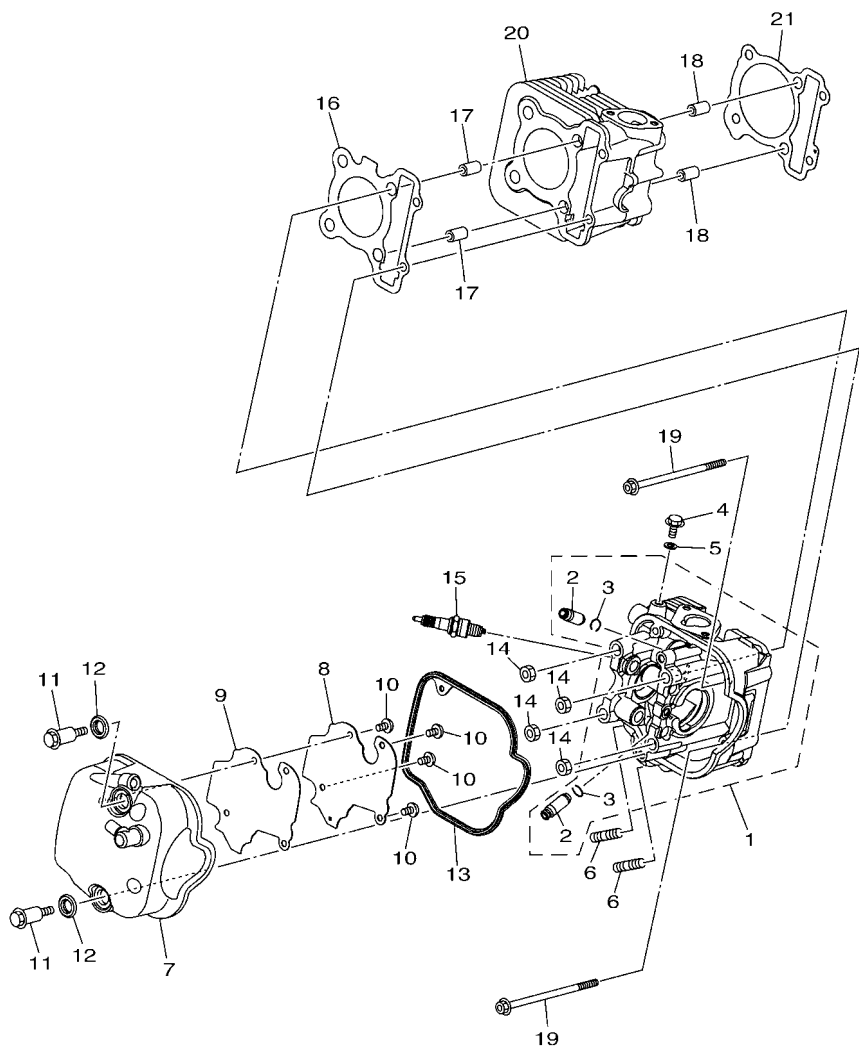
CHASSIS

FRAME.....	17
FENDER.....	18
SIDE COVER.....	19
REAR ARM & SUSPENSION.....	21
STEERING.....	22
FUEL TANK.....	24
SEAT.....	25
FRONT WHEEL.....	26
FRONT BRAKE CALIPER.....	27
REAR WHEEL.....	28
STEERING HANDLE & CABLE.....	29
FRONT MASTER CYLINDER.....	31
STAND & FOOTREST.....	32
LEG SHIELD.....	34
GENERATOR.....	36
STARTING MOTOR.....	37
FLASHER LIGHT.....	38
METER.....	39
HEADLIGHT.....	40
TAILLIGHT.....	41
HANDLE SWITCH & LEVER.....	42
ELECTRICAL 1.....	43
ELECTRICAL 2.....	44

INDEX

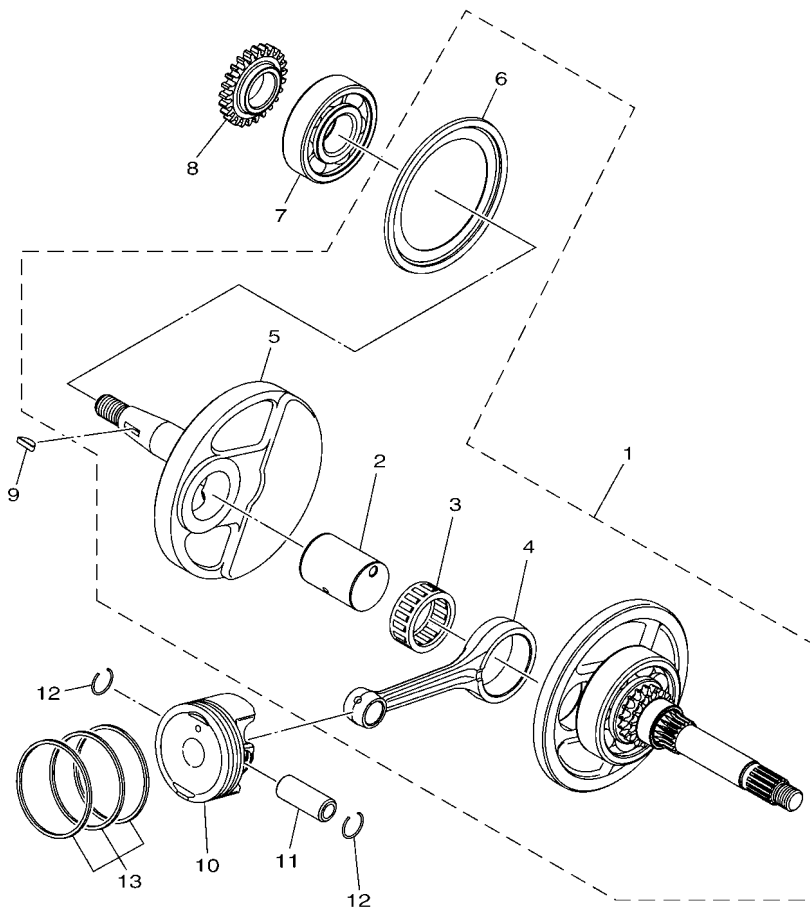
NUMERICAL INDEX.....	45
----------------------	----

FIG. 1 CYLINDER



2SX4460-R010

REF. NO.	PART NO.	DESCRIPTION	BF43				REMARKS
1	B92-E1102-00	CYLINDER HEAD ASSY	1				
2	1DR-E1133-10	.GUIDE, VALVE 1	2				
3	93440-10153	.CIRCLIP	2				
4	95E32-06010	BOLT, FLANGE DEEP RECESS	1				
5	90430-06803	GASKET	1				
6	95612-08618	BOLT, STUD	2				
7	2PH-E1191-00	COVER, CYLINDER HEAD 1	1				
8	2PH-E1165-00	PLATE, BREATHER	1				
9	2PH-E1169-00	GASKET, BREATHER COVER	1				
10	90149-05801	SCREW	4				
11	2PH-E119E-10	BOLT, COVER HEAD	2				
12	2BM-E111G-00	RUBBER, MOUNT 1	2				
13	2BM-E1193-00	GASKET, HEAD COVER 1	1				
14	95302-08600	NUT, HEXAGON	4				
15	94700-00372	PLUG, SPARK (NGK CR6HSA)	1				
16	2BL-E1181-00	GASKET, CYLINDER HEAD 1	1				
17	99530-10114	PIN, DOWEL	2				
18	99530-10114	PIN, DOWEL	2				
19	90110-06868	BOLT, HEXAGON SOCKET HEAD	2				
20	2PH-E1311-10	CYLINDER 1	1				
21	2PH-E1351-10	GASKET, CYLINDER	1				




 BJ81460-R020

FIG. 2 CRANKSHAFT & PISTON

REF. NO.	PART NO.	DESCRIPTION	BF43				REMARKS
1	2PH-E1400-31	CRANKSHAFT ASSY	1				UR Either can use
	2PH-E1400-60	CRANKSHAFT ASSY	1				UR Either can use
2	2BM-E1681-10	.PIN, CRANK 1	1				
3	93310-528YP	.BEARING	1				
4	2PH-E1651-20	.ROD, CONNECTING	1				
5	2PH-E1422-10	.CRANK 2	1				UR 2PH-E1400-31
	2PH-E1422-20	.CRANK 2	1				UR 2PH-E1400-60
6	5LW-E3452-00	.COVER, ROTOR FILTER	1				
7	93306-372X5	BEARING	1				
8	2BM-E3324-10	GEAR, PUMP DRIVE	1				
9	90280-03017	KEY, WOODRUFF	1				
10	2PH-E1631-00	PISTON (STD)	1				
11	2PH-E1633-00	PIN, PISTON	1				
12	93450-14088	CIRCLIP	2				
13	2PH-E1603-10	PISTON RING SET (STD)	1				

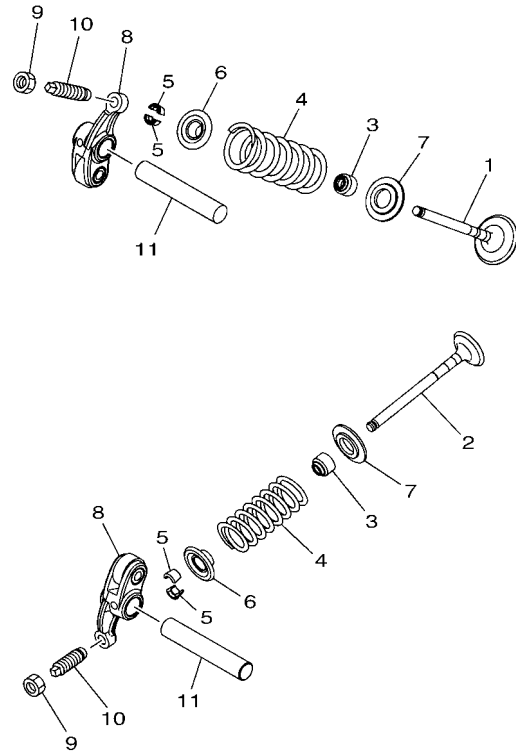


FIG. 3 VALVE

REF. NO.	PART NO.	DESCRIPTION	BF43				REMARKS
1	2PH-E2111-00	VALVE, INTAKE	1				
2	2PH-E2121-10	VALVE, EXHAUST	1				
3	54P-E2119-00	SEAL, VALVE STEM	2				
4	54P-E2113-00	SPRING, VALVE INNER	2				
5	5TL-E2118-00	LOCK, VALVE SPRING RETAINER	4				
6	54P-E2117-00	RETAINER, VALVE SPRING	2				UR Either can use
	1KP-E2117-00	RETAINER, VALVE SPRING	2				UR Either can use
7	2PH-E2126-00	SEAT, VALVE SPRING 2	2				
8	2PH-E2151-01	ARM, VALVE ROCKER	2				
9	90170-05803	NUT	2				
10	33S-E2159-10	SCREW, VALVE ADJUSTING	2				UR Either can use
	33S-E2159-01	SCREW, VALVE ADJUSTING	2				UR Either can use
11	2PH-E2146-00	SHAFT, ROCKER	2				



2BM1422-P030

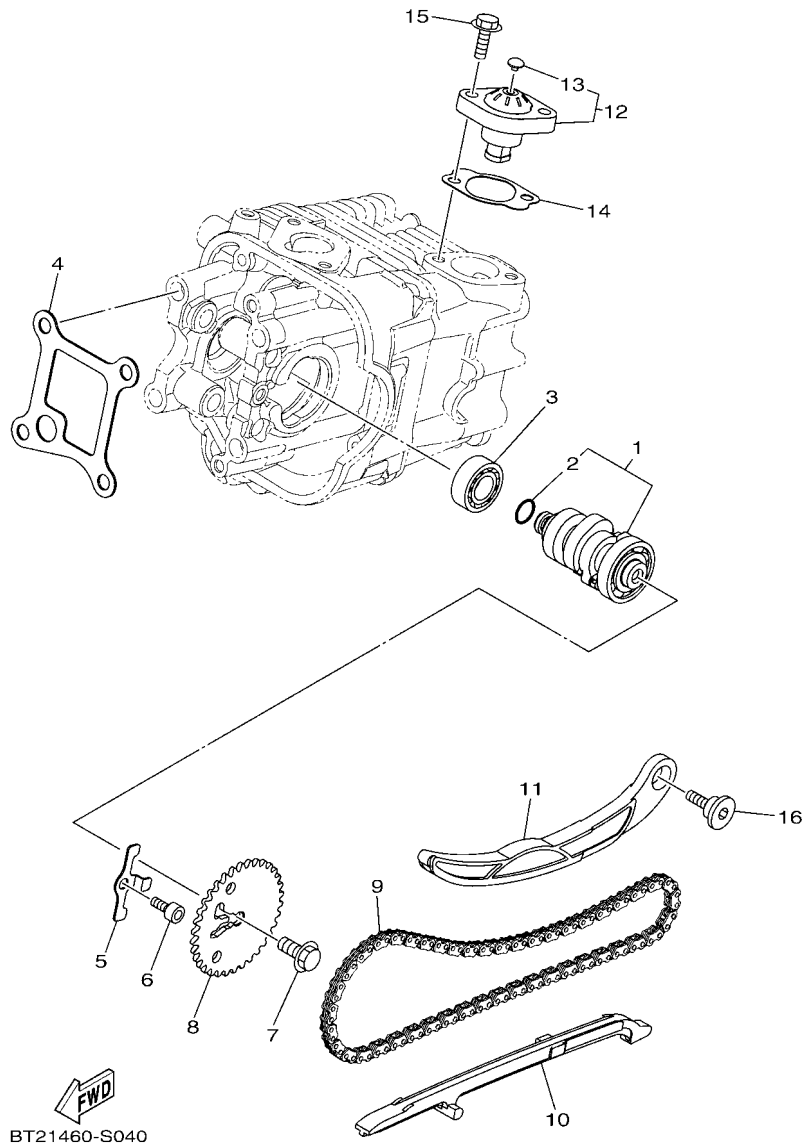
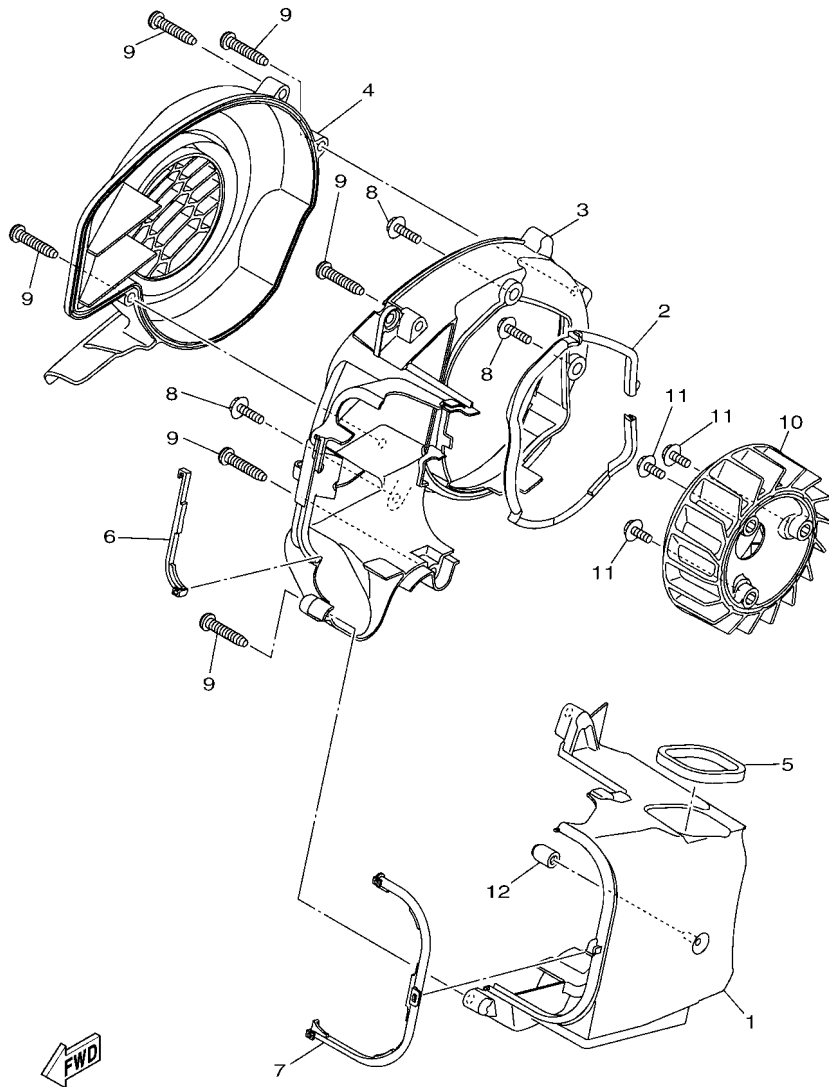


FIG. 4 CAMSHAFT & CHAIN

REF. NO.	PART NO.	DESCRIPTION	BF43				REMARKS
1	2PH-E2170-00	CAMSHAFT ASSY 1	1				
2	93210-09806	.O-RING	1				
3	93306-001YE	BEARING	1				UR Either can use
	93306-001X9	BEARING	1				UR Either can use
4	2PH-E111F-00	PLATE	1				
5	2PH-E112F-00	PLATE 2	1				
6	91312-06012	BOLT, HEXAGON SOCKET HEAD	1				
7	90105-07801	BOLT, FLANGE	1				
8	2PH-E2176-01	SPROCKET, CAM CHAIN (34T)	1				
9	94568-J7092	CHAIN	1				
10	54P-E2231-00	GUIDE, STOPPER 1	1				
11	2PH-E2241-00	GUIDE, STOPPER 2	1				
12	2BM-E2210-10	TENSIONER ASSY, CAM CHAIN	1				UR Either can use
	2BM-E2210-20	TENSIONER ASSY, CAM CHAIN	1				UR Either can use
13	5MX-E2222-00	.PLUG	1				
14	2PH-E2213-10	GASKET, TENSIONER CASE	1				
15	95E32-06020	BOLT, FLANGE DEEP RECESS	2				
16	54P-E2228-00	BOLT	1				UR Either can use
	52B-E2228-00	BOLT	1				UR Either can use



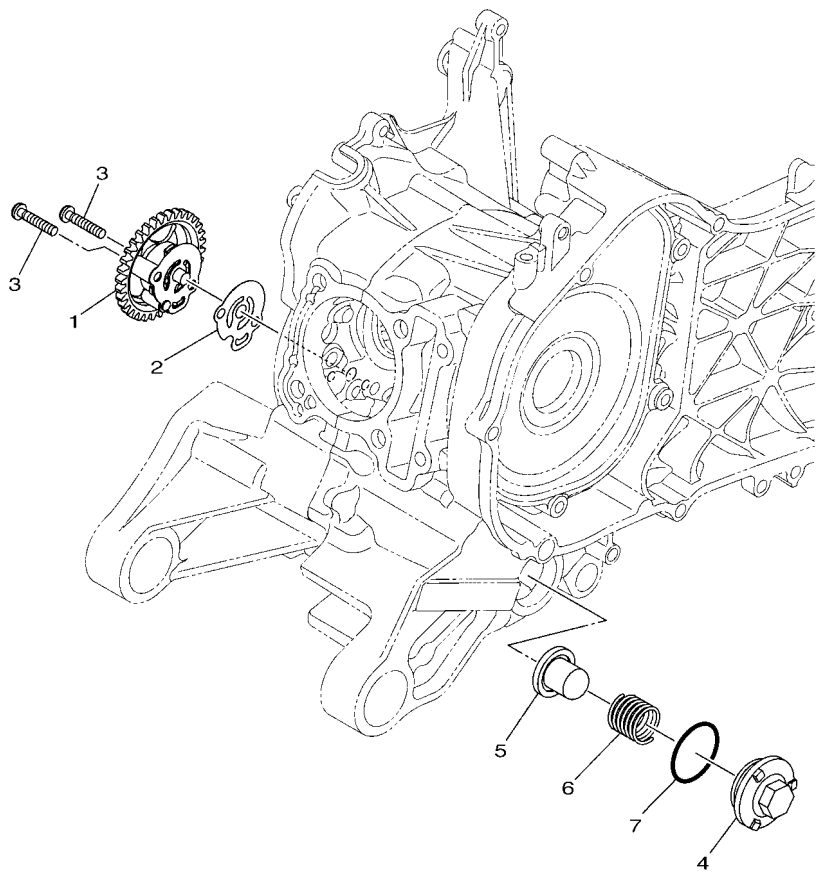
2PH1460-P050

FIG. 5 AIR SHROUD & FAN

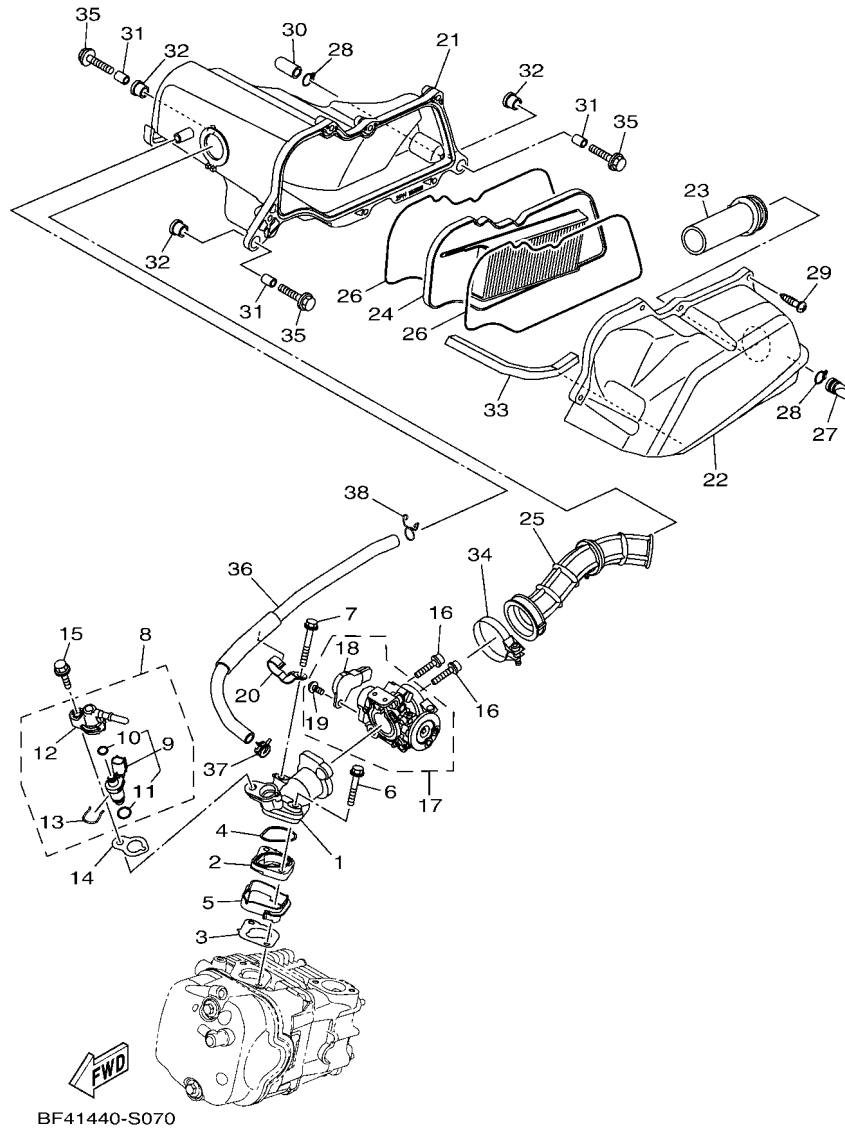
REF. NO.	PART NO.	DESCRIPTION	BF43	REMARKS
1	2PH-E2651-00	AIR SHROUD, CYLINDER 1	1	
2	2PH-E2658-00	DAMPER, AIR SHROUD 1	1	
3	2PH-E2652-00	AIR SHROUD, CYLINDER 2	1	
4	2PH-E2653-00	AIR SHROUD, CYLINDER 3	1	
5	90520-05819	DAMPER, PLATE	1	
6	2PH-E2659-10	DAMPER, AIR SHROUD 2	1	UR Either can use
	2SX-E2659-10	DAMPER, AIR SHROUD 2	1	UR Either can use
7	2PH-E2668-10	DAMPER, AIR SHROUD 3	1	
8	95E32-06020	BOLT, FLANGE DEEP RECESS	3	
9	97702-60530	SCREW, TAPPING	6	
10	2PH-E2611-10	FAN	1	
11	95D32-06016	BOLT, FLANGE DEEP RECESS	3	
12	5LW-E3569-00	PLUG, BLIND	1	

FIG. 6 OIL PUMP

REF. NO.	PART NO.	DESCRIPTION	BF43				REMARKS
1	2PH-E3300-10	OIL PUMP ASSY	1				
2	BF4-E3475-00	GASKET	1				
3	98502-05020	SCREW, PAN HEAD	2				
4	54P-E5351-00	PLUG, DRAIN	1				
5	54P-E3411-00	STRAINER, OIL	1				
6	90501-16004	SPRING, COMPRESSION	1				
7	93210-29800	O-RING	1				



2BM1422-P050



BF41440-S070

FIG. 7 INTAKE

REF. NO.	PART NO.	DESCRIPTION	BF43				REMARKS
1	2PH-E3585-10	MANIFOLD	1				
2	2PH-E3595-00	JOINT	1				
3	2PH-E3556-10	GASKET, MANIFOLD	1				
4	93210-35883	O-RING	1				
5	2PH-E3593-00	DAMPER	1				
6	95D32-06035	BOLT, FLANGE DEEP RECESS	1				
7	95D32-06045	BOLT, FLANGE DEEP RECESS	1				
8	2PH-E3770-10	INJECTOR ASSY	1				
9	2PH-E3761-10	.INJECTOR	1				
10	54P-E4147-00	.O-RING	1				
11	5CA-E4147-00	.O-RING	1				
12	54P-E3938-00	.PIPE	1				
13	54P-E4137-00	.CLIP	1				
14	2PH-E3557-10	GASKET	1				
15	95D32-06025	BOLT, FLANGE DEEP RECESS	1				
16	90110-06846	BOLT, HEXAGON SOCKET HEAD	2				
17	2PH-E3750-00	THROTTLE BODY ASSY	1				
18	2PH-H5885-00	.THROTTLE SENSOR ASSY	1				
19	1PM-14216-00	.SCREW	1				
20	2PH-E4146-00	PLATE	1				
21	2PH-E4411-00	CASE, AIR CLEANER 1	1				
22	2PH-E4412-00	CAP, CLEANER CASE 1	1				
23	2PH-E4437-00	DUCT	1				
24	2PH-E4450-20	ELEMENT ASSY, AIR CLEANER	1				
25	2PH-E4453-00	JOINT, AIR CLEANER 1	1				
26	2PH-E4452-00	SEAL	2				
27	5TP-E443G-00	PIPE, DRAIN 2	1				

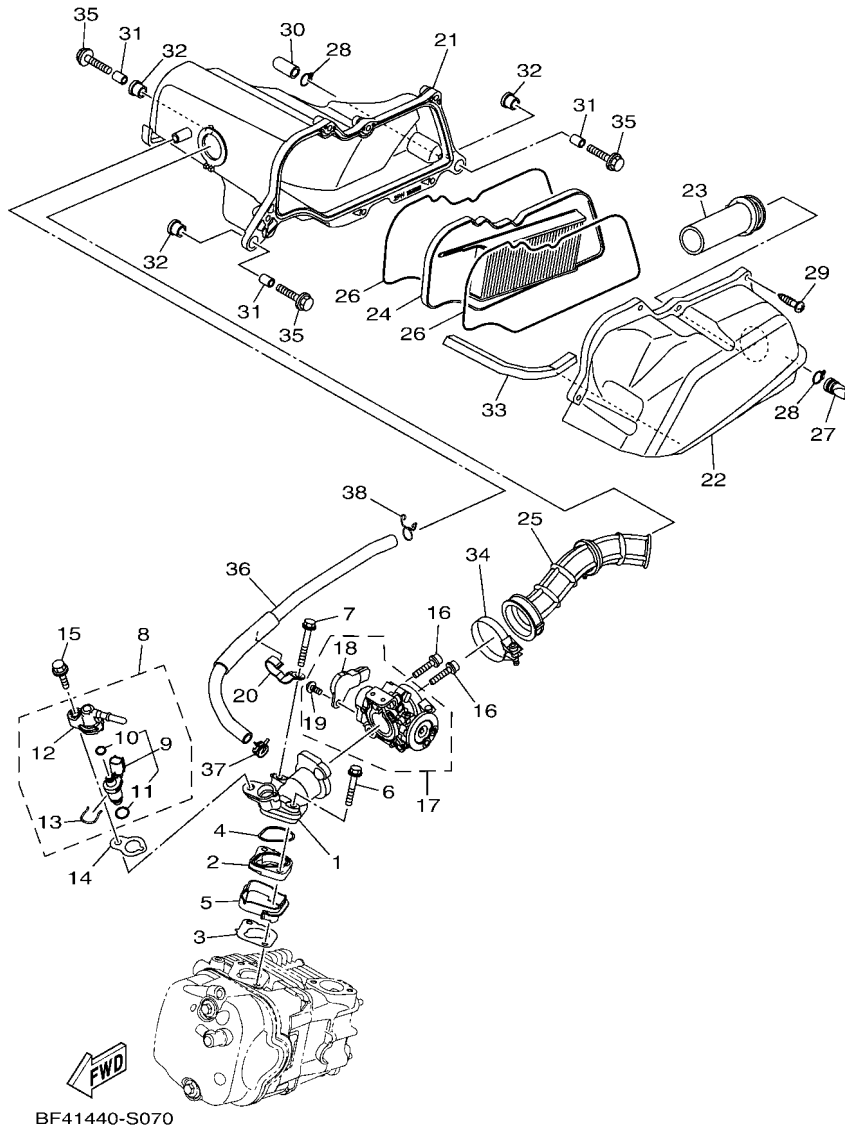
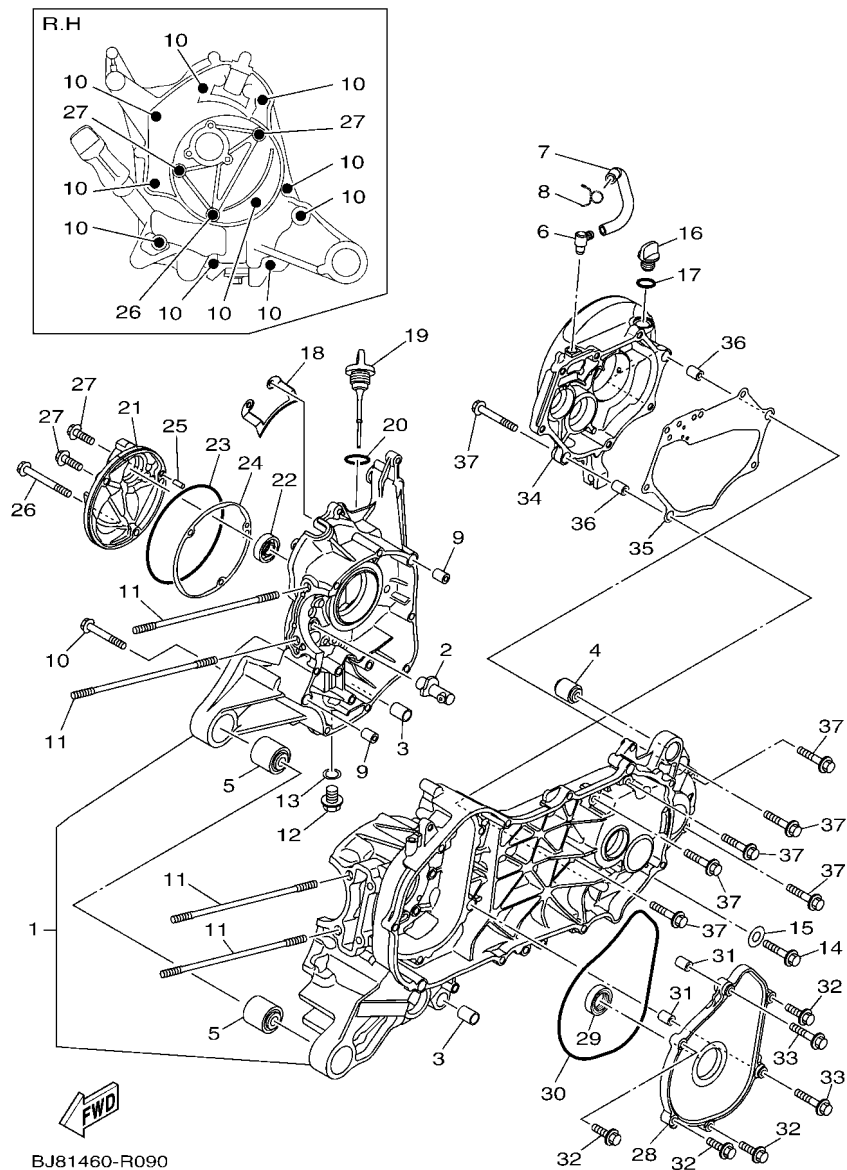


FIG. 7 INTAKE

REF. NO.	PART NO.	DESCRIPTION	BF43				REMARKS
28	90467-12807	CLIP	2				
29	97707-50025	SCREW, TAPPING	6				
30	5TL-E443E-00	PIPE, DRAIN	1				
31	90387-064W3	COLLAR	3				
32	90480-13013	GROMMET	3				
33	90520-10825	DAMPER, PLATE	1				
34	90450-46803	HOSE CLAMP ASSY	1				
35	95D32-06025	BOLT, FLANGE DEEP RECESS	3				
36	2PH-E1166-10	PIPE, BREATHER 1	1				UR Either can use
	2SX-E1166-10	PIPE, BREATHER 1	1				UR Either can use
37	90467-13808	CLIP	1				
38	90467-13858	CLIP	1				

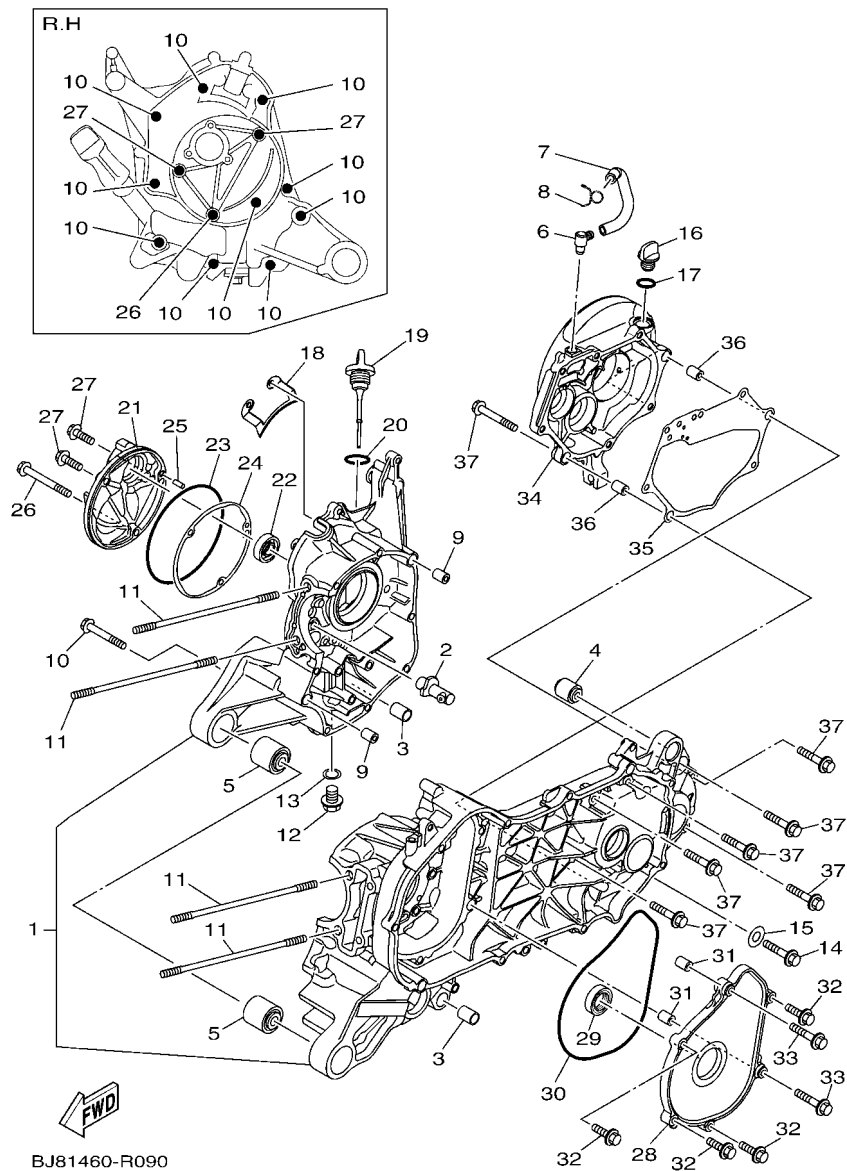
FIG. 9 CRANKCASE



BJ81460-R090

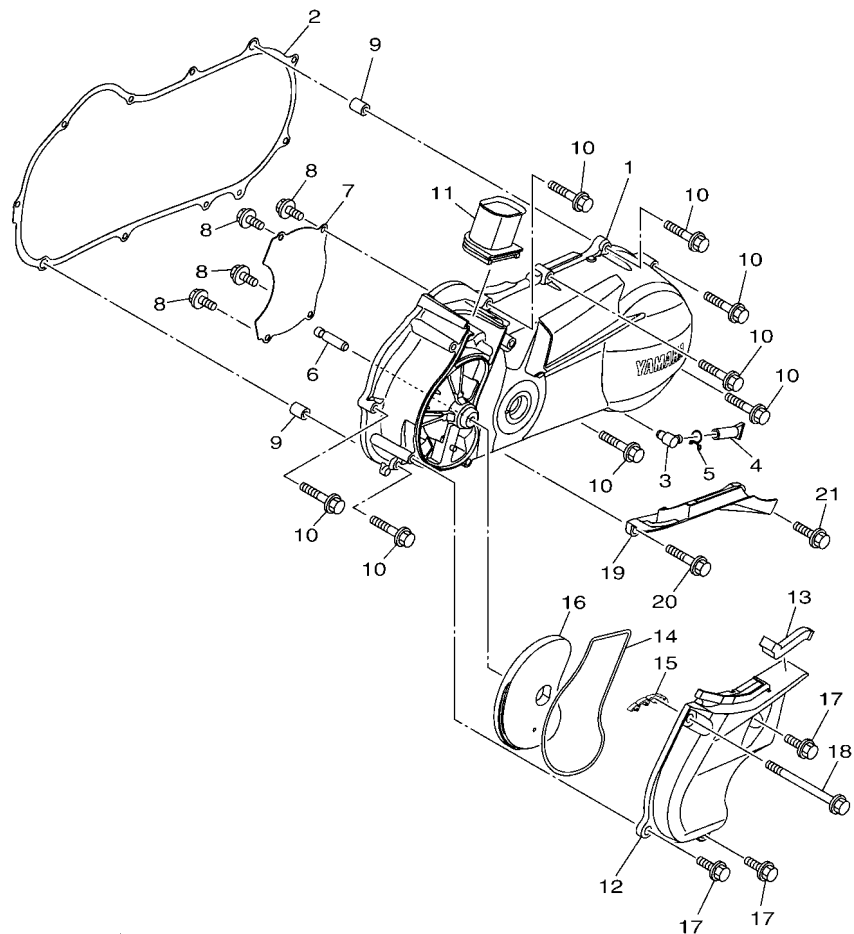
REF. NO.	PART NO.	DESCRIPTION	BF43	REMARKS
1	2PH-E5150-00	CRANKCASE ASSY	1	
2	2PH-E5155-00	NOZZLE 3	1	
3	1GC-F7121-00	BUSH	2	UR Either can use
	54P-F7121-00	BUSH	2	UR Either can use
4	5MX-F2216-00	BUSH, REAR SHOCK ABSORBER	1	UR Either can use
	90388-08803	DAMPER	1	UR Either can use
5	90388-10805	DAMPER	2	
6	54P-E5371-00	BREATHER	1	
7	2PH-E5373-00	PIPE, BREATHER	1	UR Either can use
	2SX-E5373-00	PIPE, BREATHER	1	UR Either can use
8	90467-11825	CLIP	1	
9	99530-10114	PIN, DOWEL	2	
10	95E32-06060	BOLT, FLANGE DEEP RECESS	10	
11	90116-08843	BOLT, STUD	4	
12	90340-12816	PLUG, STRAIGHT SCREW	1	
13	90430-12803	GASKET	1	
14	95812-06040	BOLT, FLANGE	1	
15	90430-06803	GASKET	1	
16	5LW-E5363-00	PLUG, OIL	1	
17	93210-148H8	O-RING	1	
18	2PH-E5113-00	PLATE	1	
19	2PH-E5362-10	PLUG, OIL LEVEL	1	
20	5LW-E3769-00	O-RING	1	
21	2PH-E5417-00	COVER, CAP	1	
22	93102-19814	OIL SEAL	1	UR Either can use
	93102-19817	OIL SEAL	1	UR Either can use
23	93211-07800	O-RING	1	

FIG. 9 CRANKCASE



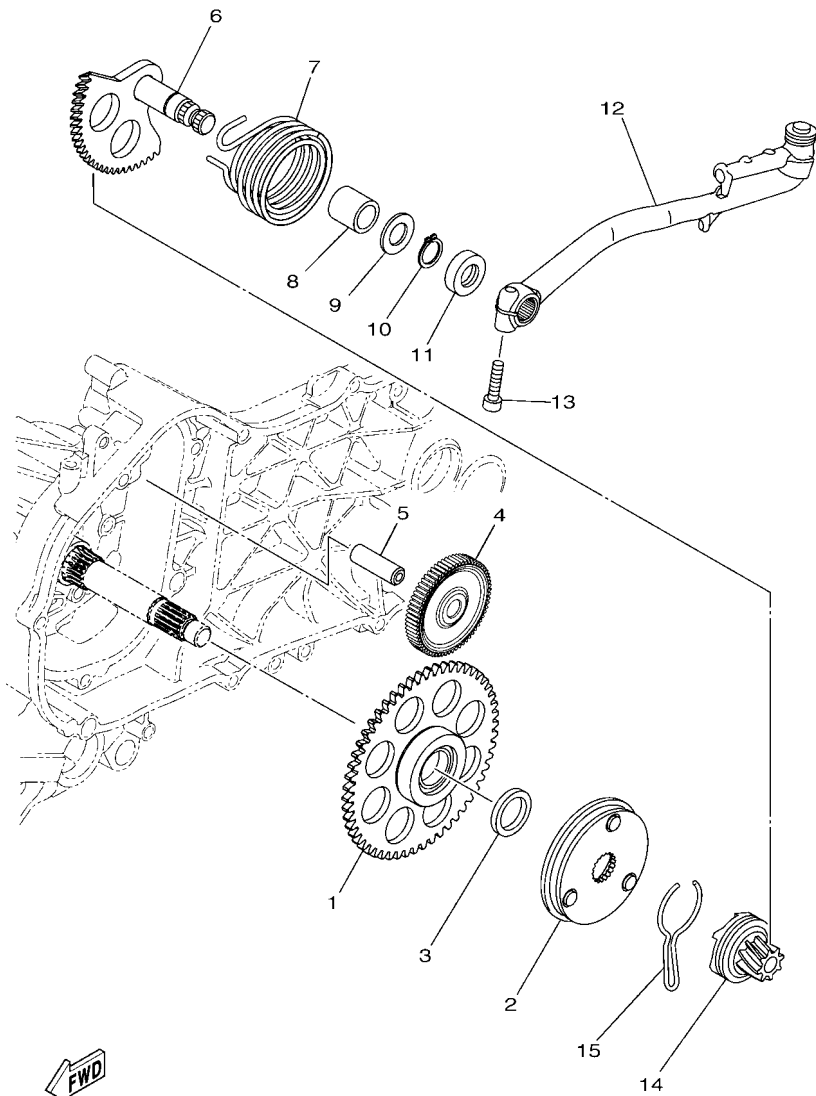
REF. NO.	PART NO.	DESCRIPTION	BF43	REMARKS
24	2PH-E5453-10	GASKET	1	
25	99480-05010	PIN	1	
26	95E32-06070	BOLT, FLANGE DEEP RECESS	1	
27	95E32-06020	BOLT, FLANGE DEEP RECESS	2	
28	2PH-E5423-00	COVER 2	1	
29	93102-25816	OIL SEAL	1	UR Either can use
	93102-25819	OIL SEAL	1	UR Either can use
30	93211-47801	O-RING	1	
31	99530-10114	PIN, DOWEL	2	
32	95E32-06025	BOLT, FLANGE DEEP RECESS	4	
33	95E32-06035	BOLT, FLANGE DEEP RECESS	2	
34	2PH-E5421-00	COVER, CRANKCASE 2	1	
35	2PH-E5461-10	GASKET, CRANKCASE COVER 2	1	
36	99530-10114	PIN, DOWEL	2	
37	95E32-06035	BOLT, FLANGE DEEP RECESS	7	

FIG. 10 CRANKCASE COVER 1



REF. NO.	PART NO.	DESCRIPTION	BF43	REMARKS
1	B92-E5411-00	COVER, CRANKCASE 1	1	
2	2PH-E5451-10	GASKET, CRANKCASE COVER 1	1	
3	54P-E5371-00	BREATHER	1	
4	4ST-E443E-00	PIPE, DRAIN	1	
5	90467-110A3	CLIP	1	
6	5LW-15659-01	SHAFT	1	UR Either can use
	1GC-E5659-00	SHAFT	1	UR Either can use
7	2PH-E5191-10	PLATE	1	
8	95E32-06010	BOLT, FLANGE DEEP RECESS	4	
9	99530-10114	PIN, DOWEL	2	
10	95E32-06035	BOLT, FLANGE DEEP RECESS	8	
11	2PH-E5473-00	DUCT, AIR	1	
12	2PH-E5471-00	DUCT, AIR	1	
13	2PH-E5316-00	DAMPER 1	1	
14	2PH-E5472-00	SEAL, AIR DUCT	1	
15	2PH-E5495-00	SEAL, PROTECTOR 1	1	
16	2PH-E5407-00	ELEMENT 1	1	
17	95D32-06020	BOLT, FLANGE DEEP RECESS	3	
18	95D32-06090	BOLT, FLANGE DEEP RECESS	1	
19	2PH-E5413-00	COVER	1	
20	95E32-06045	BOLT, FLANGE DEEP RECESS	1	
21	95E32-06020	BOLT, FLANGE DEEP RECESS	1	


2PH1460-P100

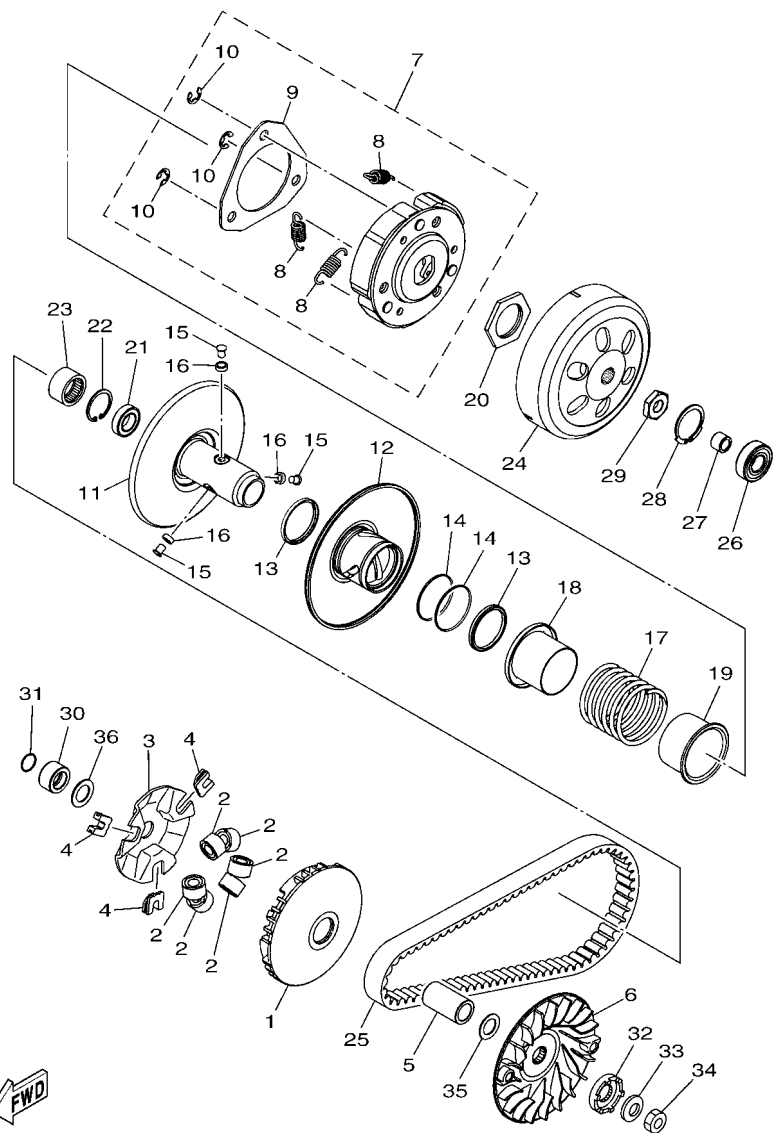


2PH1460-P110

FIG. 11 STARTER

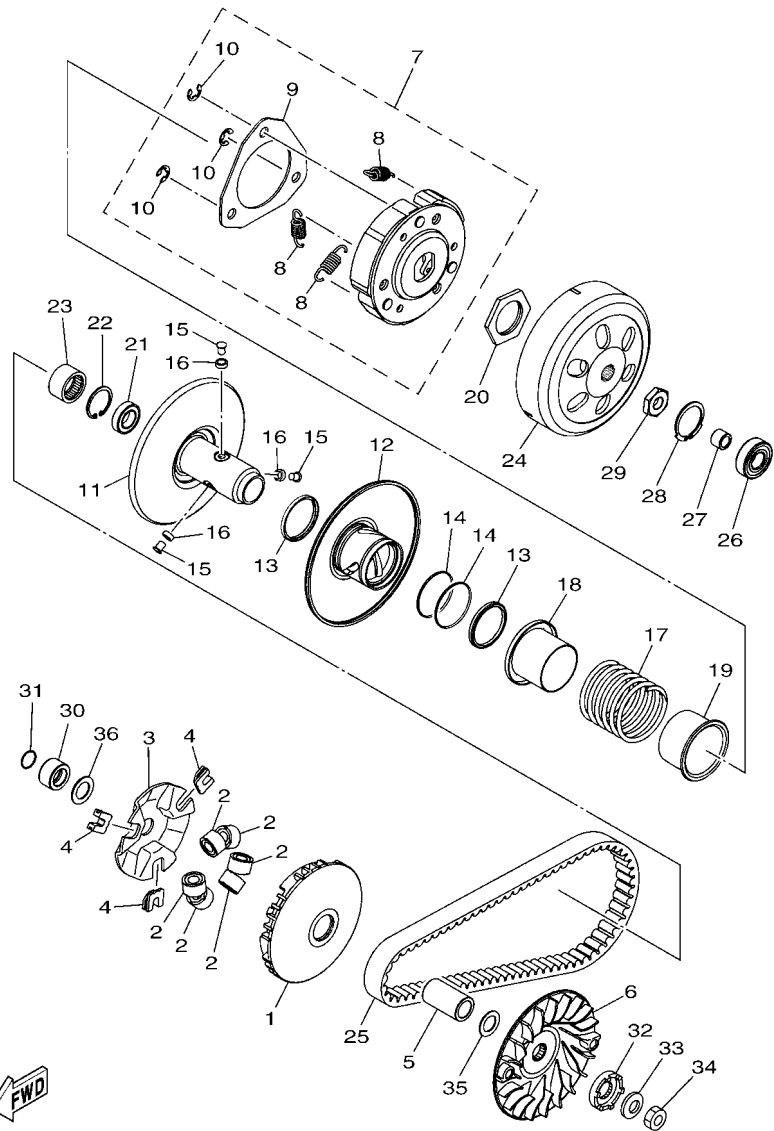
REF. NO.	PART NO.	DESCRIPTION	BF43	REMARKS
1	2PH-E5520-20	STARTER WHEEL ASSY	1	
2	2PH-E5570-00	STARTER CLUTCH ASSY	1	UR Either can use
	2PH-E5570-11	STARTER CLUTCH ASSY	1	UR Either can use
3	44D-E5598-00	COLLAR	1	UR Either can use
	1GC-E5598-00	COLLAR	1	UR Either can use
4	2BM-E5512-00	GEAR, IDLER 1	1	
5	44D-E5521-00	SHAFT 1	1	UR Either can use
	1GC-E5521-00	SHAFT 1	1	UR Either can use
6	2PH-E5601-10	KICK SHAFT ASSY	1	
7	90508-32768	SPRING, TORSION	1	
8	90380-15811	BUSH, SOLID	1	
9	90201-154E8	WASHER, PLATE (T=1.0)	1	
10	99009-15400	CIRCLIP	1	
11	93102-15801	OIL SEAL	1	
12	2BL-E5620-10	KICK CRANK ASSY	1	
13	91332-06025	BOLT	1	
14	2PH-E5630-00	KICK PINION ASSY	1	
15	5MX-E5673-00	CLIP	1	

FIG. 12 CLUTCH



FWD
2SX1460-P120

REF. NO.	PART NO.	DESCRIPTION	BF43				REMARKS
1	2PH-E7620-00	PRIMARY SLIDING SHEAVE COMP.	1				
2	2SX-E7632-10	WEIGHT	6				
3	2PH-E7623-00	CAM	1				
4	2PH-E7653-00	SLIDER	3				
5	2PH-E7674-00	COLLAR, GUIDE	1				
6	2SX-E7611-10	SHEAVE, PRIMARY FIXED	1				
7	BJ8-E6620-00	CLUTCH CARRIER ASSY	1				
8	2PH-E6626-00	.SPRING, CLUTCH WEIGHT 1	3				
9	2PH-E6523-00	.PLATE, WEIGHT THRUST	1				
10	2PH-E6819-00	.CIRCLIP, CLUTCH	3				
11	BJ8-E7660-00	SECONDARY FIXED SHEAVE COMP.	1				
12	BJ8-E7670-00	SECONDARY SLIDING SHEAVE	1				
13	2PH-E7465-00	SEAL	2				
14	2PH-E7465-10	SEAL	2				
15	2PH-E7664-00	PIN, GUIDE	3				
16	2PH-E7674-10	COLLAR, GUIDE	3				
17	2PH-E7683-00	SPRING, SECONDARY	1				
18	2PH-E7684-00	SEAT, SECONDARY SPRING	1				
19	2PH-E7644-00	SEAT, SPRING	1				
20	2PH-E7668-00	NUT	1				
21	2PH-E7678-00	BEARING	1				
22	2PH-E5744-00	CIRCLIP	1				
23	2PH-E7678-10	BEARING	1				
24	2PH-E6611-00	CLUTCH HOUSING COMP.	1				
25	2PH-E7641-00	V-BELT	1				
26	93306-252YB	BEARING	1				
27	90380-10803	BUSH, SOLID	1				

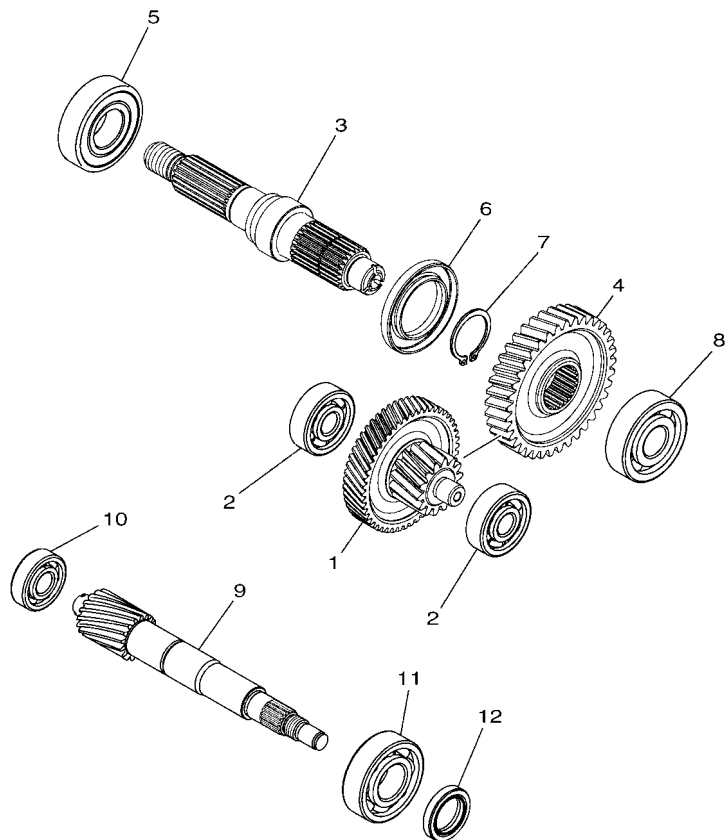


2SX1460-P120

FIG. 12 CLUTCH

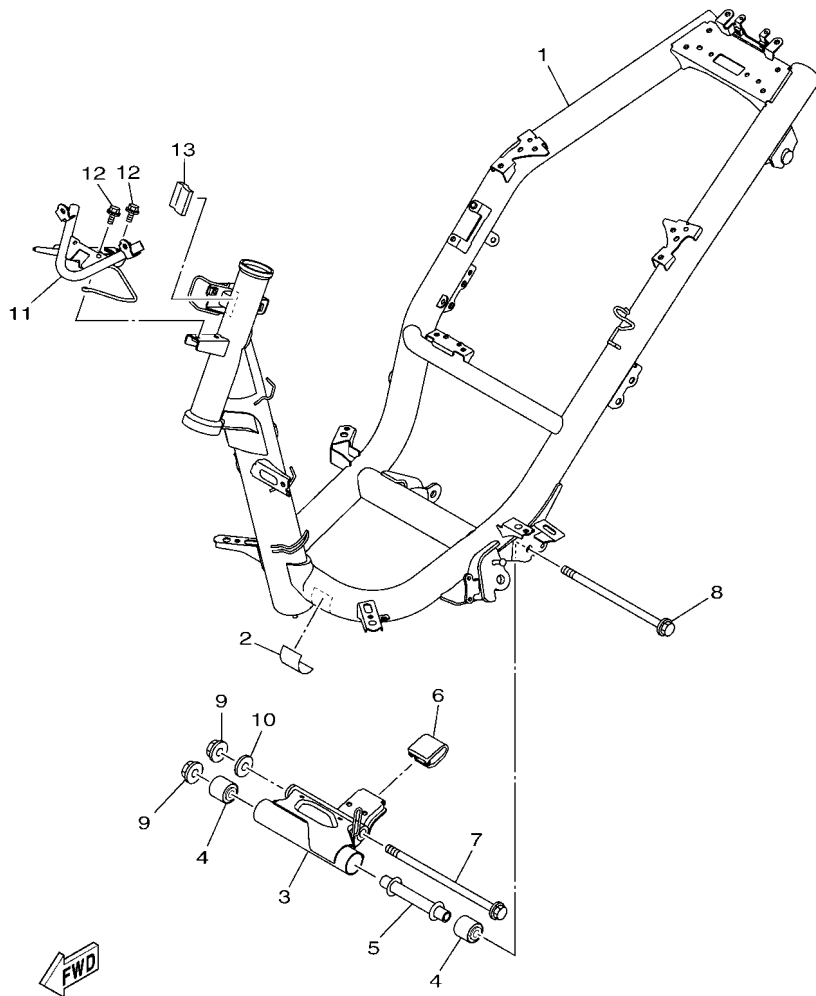
REF. NO.	PART NO.	DESCRIPTION	BF43				REMARKS
28	99009-35700	CIRCLIP	1				
29	90170-12803	NUT	1				
30	2PH-E7645-10	COLLAR	1				
31	93210-16805	O-RING	1				
32	5MX-E5657-00	CLUTCH, ONEWAY	1				
33	90208-12808	WASHER, CONICAL SPRING	1				
34	90170-12800	NUT	1				
35	90201-15846	WASHER, PLATE	1				
36	90201-16817	WASHER, PLATE	1				

FIG. 13 TRANSMISSION




2PH1460-P130

REF. NO.	PART NO.	DESCRIPTION	BF43				REMARKS
1	2PH-E7410-00	MAIN AXLE COMP. (12T/50T)	1				UR Either can use
	2PH-E7410-10	MAIN AXLE COMP. (12T/50T)	1				UR Either can use
2	93306-351Y5	BEARING	2				
3	2PH-E7421-00	AXLE, DRIVE	1				UR Either can use
	2PH-E7421-10	AXLE, DRIVE	1				UR Either can use
4	2PH-E7211-00	GEAR, 1ST WHEEL (39T)	1				UR Either can use
	2PH-E7211-10	GEAR, 1ST WHEEL (39T)	1				UR Either can use
5	93306-272YA	BEARING	1				
6	93102-32801	OIL SEAL	1				UR Either can use
	93102-32809	OIL SEAL	1				UR Either can use
7	99009-25400	CIRCLIP	1				
8	93306-303YN	BEARING	1				UR Either can use
	93306-303YS	BEARING	1				UR Either can use
9	2PH-E6111-00	GEAR, PRIMARY DRIVE (16T)	1				UR Either can use
	2PH-E6111-10	GEAR, PRIMARY DRIVE (16T)	1				UR Either can use
10	93306-201YK	BEARING	1				UR Either can use
	93306-201YR	BEARING	1				UR Either can use
11	93306-204XT	BEARING	1				UR Either can use
	93306-204XV	BEARING	1				UR Either can use
12	93102-20815	OIL SEAL	1				UR Either can use
	93102-20816	OIL SEAL	1				UR Either can use

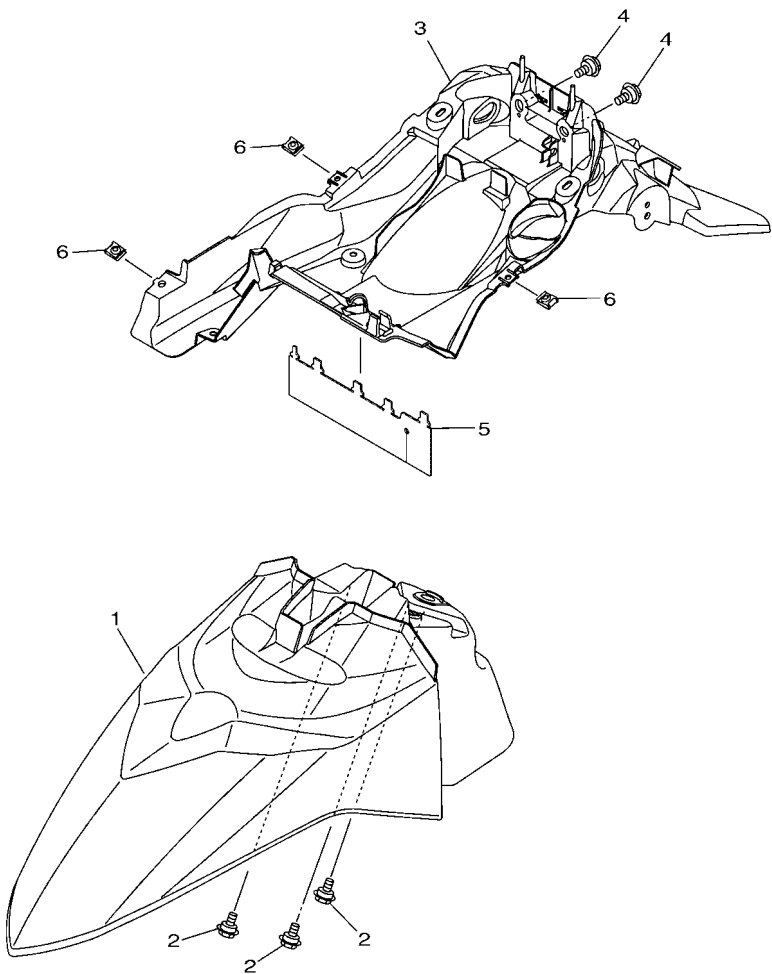


2PH5460-S140

FIG. 14 FRAME

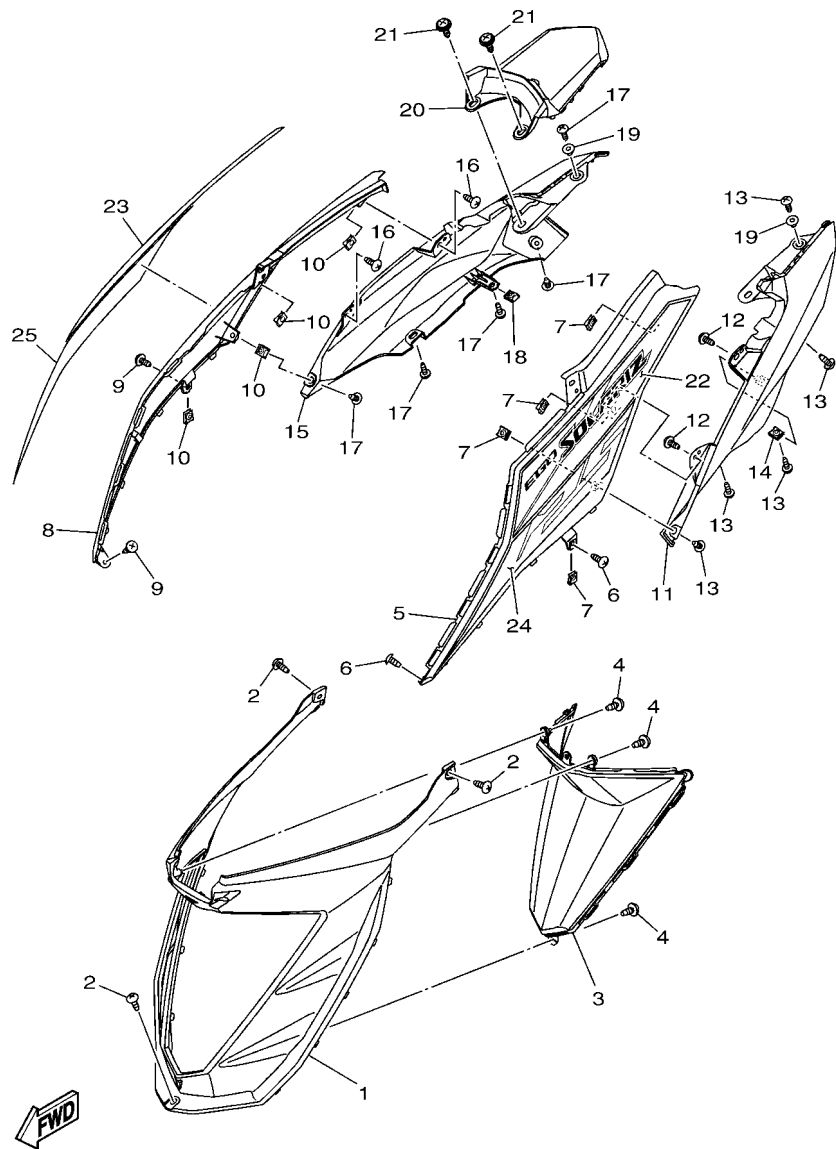
REF. NO.	PART NO.	DESCRIPTION	BF43				REMARKS
1	BF4-F1110-00	FRAME COMP.	1				
2	5D9-F414G-00	SEAL	1				
3	2PH-F1410-20	ENGINE BRACKET COMP.	1				
4	90388-10800	DAMPER	2				
5	54P-F1459-00	SPACER	1				
6	2PH-F7114-00	STOPPER, MAIN STAND	1				
7	90105-108B2	BOLT, FLANGE	1				
8	54P-F2141-00	SHAFT, PIVOT	1				
9	95602-10200	NUT, S/L FLANGE	2				
10	90201-10831	WASHER, PLATE	1				
11	BF4-F8356-00	STAY 1	1				
12	95D02-06010	BOLT, FLANGE DEEP RECESS	2				
13	90520-08809	DAMPER, PLATE	1				

FIG. 15 FENDER



FWD
BF41440-S150

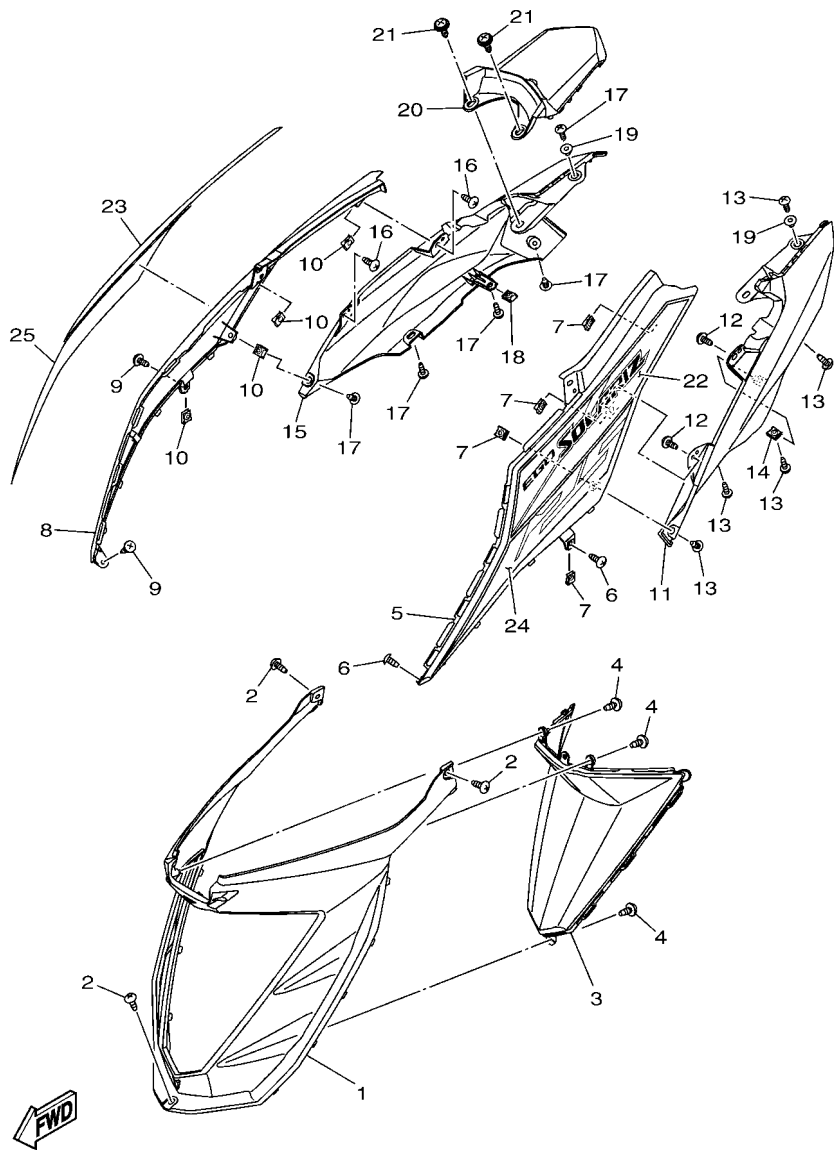
REF. NO.	PART NO.	DESCRIPTION	BF43				REMARKS
1	BF4-F1511-00-P0	FENDER, FRONT	1				UR FOR RM7
	BF4-F1511-00-P7	FENDER, FRONT	1				UR FOR VPBC5
	BF4-F1511-00-P8	FENDER, FRONT	1				UR FOR LYNM9
	BF4-F1511-00-P9	FENDER, FRONT	1				UR FOR CM6
2	90109-068B4	BOLT	3				
3	BF4-F1611-00	FENDER, REAR	1				
4	90109-068B4	BOLT	2				
5	B92-F1621-00	FLAP	1				
6	90183-05807	NUT, SPRING	3				



BF43440-V160

FIG. 16 SIDE COVER

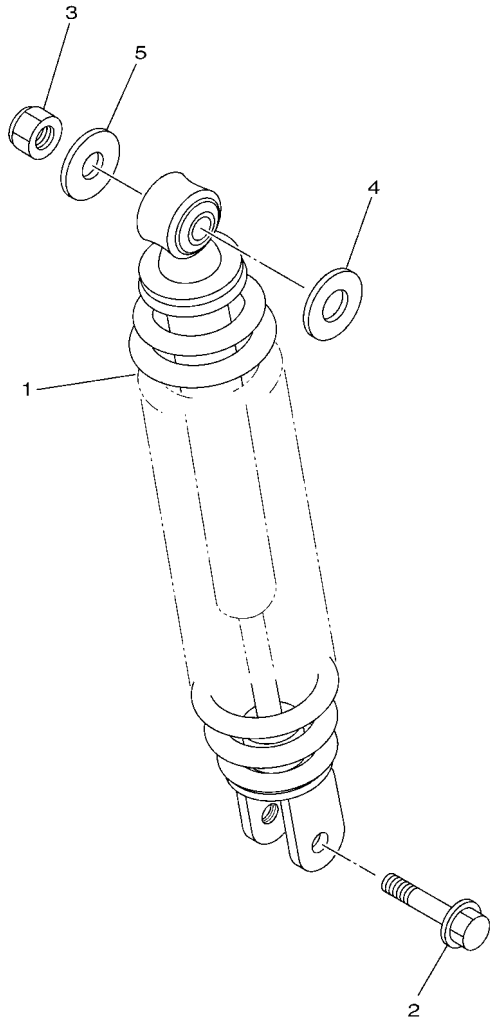
REF. NO.	PART NO.	DESCRIPTION	BF43				REMARKS
1	BF4-F172W-00	COVER	1				
2	97707-50016	SCREW, TRUSS HEAD TAPPING	3				
3	BF4-F171A-00	COVER, TOP	1				
4	97702-50014	SCREW, TAPPING	3				
5	BF4-F1711-00-P6	COVER, SIDE 1	1				SMX
6	97707-50016	SCREW, TRUSS HEAD TAPPING	2				
7	90183-05807	NUT, SPRING	4				
8	BF4-F1721-00-P6	COVER, SIDE 2	1				SMX
9	97707-50016	SCREW, TRUSS HEAD TAPPING	2				
10	90183-05807	NUT, SPRING	4				
11	BF4-F1731-00	COVER, SIDE 3	1				
12	97702-50014	SCREW, TAPPING	2				
13	97707-50016	SCREW, TRUSS HEAD TAPPING	5				
14	90183-05807	NUT, SPRING	1				
15	BF4-F1741-00	COVER, SIDE 4	1				
16	97702-50014	SCREW, TAPPING	2				
17	97707-50016	SCREW, TRUSS HEAD TAPPING	5				
18	90183-05807	NUT, SPRING	1				
19	90387-05820	COLLAR	2				
20	BF4-F171E-00	COVER, SIDE 5	1				
21	90159-06810	SCREW, WITH WASHER	2				
22	BF4-F173E-80	GRAPHIC 1	1				UR FOR RM7
	BF4-F173E-90	GRAPHIC 1	1				UR FOR VPBC5
	BF4-F173E-A0	GRAPHIC 1	1				UR FOR LYNM9
	BF4-F173E-B0	GRAPHIC 1	1				UR FOR CM6
23	BF4-F173F-80	GRAPHIC 2	1				UR FOR RM7
	BF4-F173F-90	GRAPHIC 2	1				UR FOR VPBC5



BF43440-V160

FIG. 16 SIDE COVER

REF. NO.	PART NO.	DESCRIPTION	BF43			REMARKS
23	BF4-F173F-A0	GRAPHIC 2	1			UR FOR LYNM9
	BF4-F173F-B0	GRAPHIC 2	1			UR FOR CM6
24	BF4-F174G-80	GRAPHIC 3	1			UR FOR RM7
	BF4-F174G-90	GRAPHIC 3	1			UR FOR VPBC5
	BF4-F174G-A0	GRAPHIC 3	1			UR FOR LYNM9
	BF4-F174G-B0	GRAPHIC 3	1			UR FOR CM6
25	BF4-F174H-80	GRAPHIC 4	1			UR FOR RM7
	BF4-F174H-90	GRAPHIC 4	1			UR FOR VPBC5
	BF4-F174H-A0	GRAPHIC 4	1			UR FOR LYNM9
	BF4-F174H-B0	GRAPHIC 4	1			UR FOR CM6




 54S1431-L170

FIG. 17 REAR ARM & SUSPENSION

REF. NO.	PART NO.	DESCRIPTION	BF43				REMARKS
1	10C-F2210-30	SHOCK ABSORBER ASSY, REAR	1				
2	90105-088H4	BOLT, FLANGE	1				
3	95302-10600	NUT, HEXAGON	1				
4	90201-12028	WASHER, PLATE	1				
5	90201-10065	WASHER, PLATE	1				

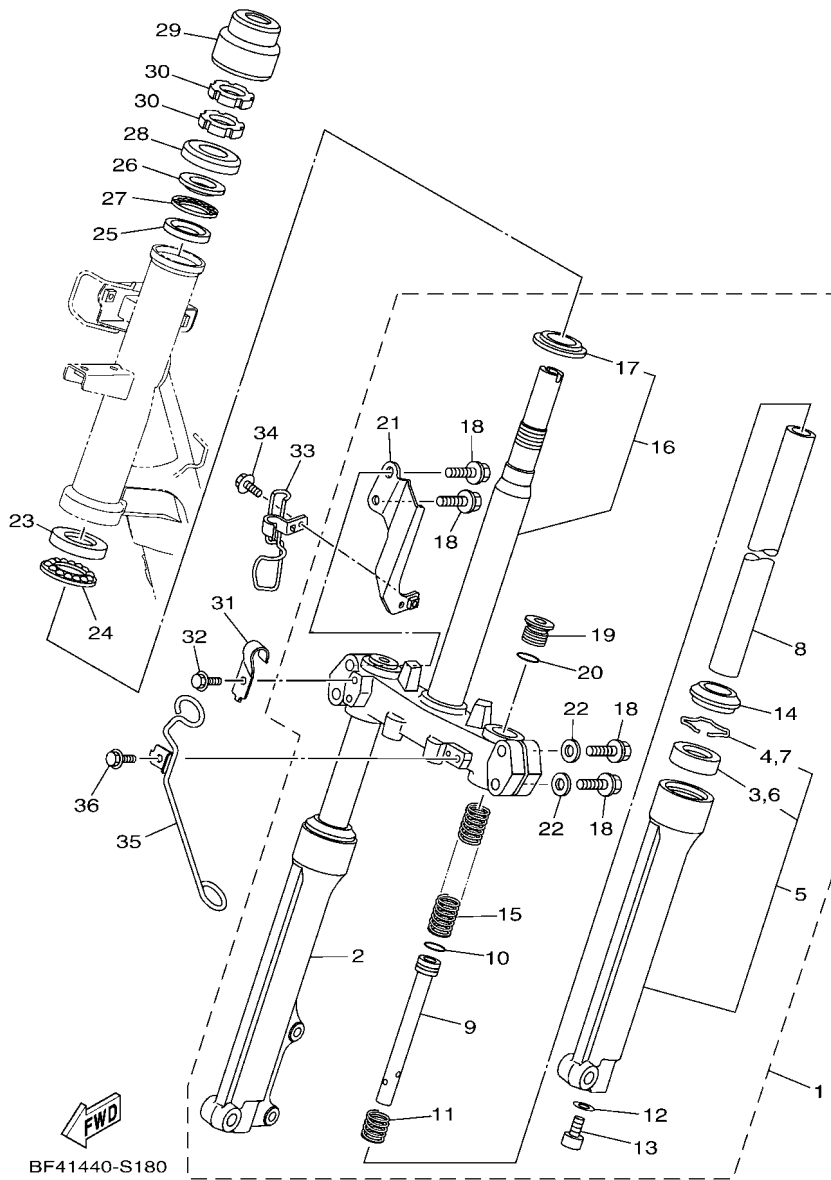


FIG. 18 STEERING

REF. NO.	PART NO.	DESCRIPTION	BF43				REMARKS
1	1VB-F3100-01	FRONT FORK ASSY	1				
2	1VB-F3136-00	.TUBE, OUTER 2	1				
3	4UV-F3145-00	.OIL SEAL	1				
4	5P0-F3156-00	.RING, SNAP	1				
5	1VB-F3126-00	.TUBE, OUTER (L.H)	1				
6	4UV-F3145-00	.OIL SEAL	1				
7	5P0-F3156-00	.RING, SNAP	1				
8	5VW-F3110-00	.INNER TUBE COMP.1	2				
9	1VB-F3170-00	.CYLINDER COMP., FRONT FORK	2				
10	2JG-F3157-00	.RING, PISTON	2				
11	31D-F3152-00	.SPRING, SUB	2				
12	509-F3158-L0	.GASKET	2				
13	31B-F3181-00	.BOLT, HEXAGON SOCKET HEAD	2				
14	5LL-F3144-00	.SEAL, DUST	2				
15	1VB-F3141-00	.SPRING, FRONT FORK	2				
16	4D0-F3340-00	.UNDER BRACKET COMP.	1				
17	156-F3411-00	.RACE, BALL 1	1				
18	4D0-F3346-00	.BOLT 1	4				
19	5VW-F3111-00	.BOLT, CAP	2				
20	2JG-F3147-00	.O-RING	2				
21	1VB-F334G-00	.BRACKET 1	1				
22	4D0-F3165-00	.WASHER, FELT	2				
23	1KL-F3412-10	RACE, BALL 2	1				
24	5VL-F341E-10	RETAINER, BALL BEARING	1				
25	4RT-F3412-10	RACE, BALL 2	1				
26	4RT-F3411-10	RACE, BALL 1	1				
27	1P6-F341E-10	RETAINER, BALL BEARING	1				

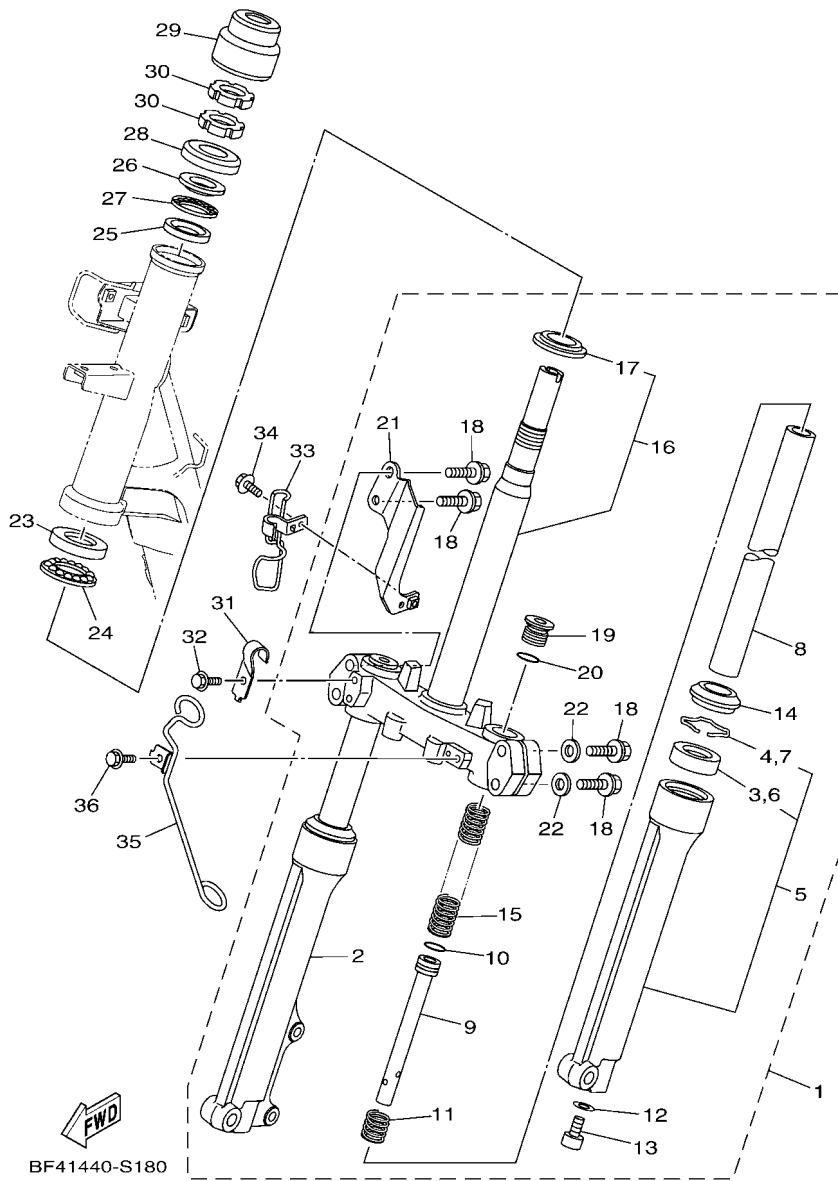
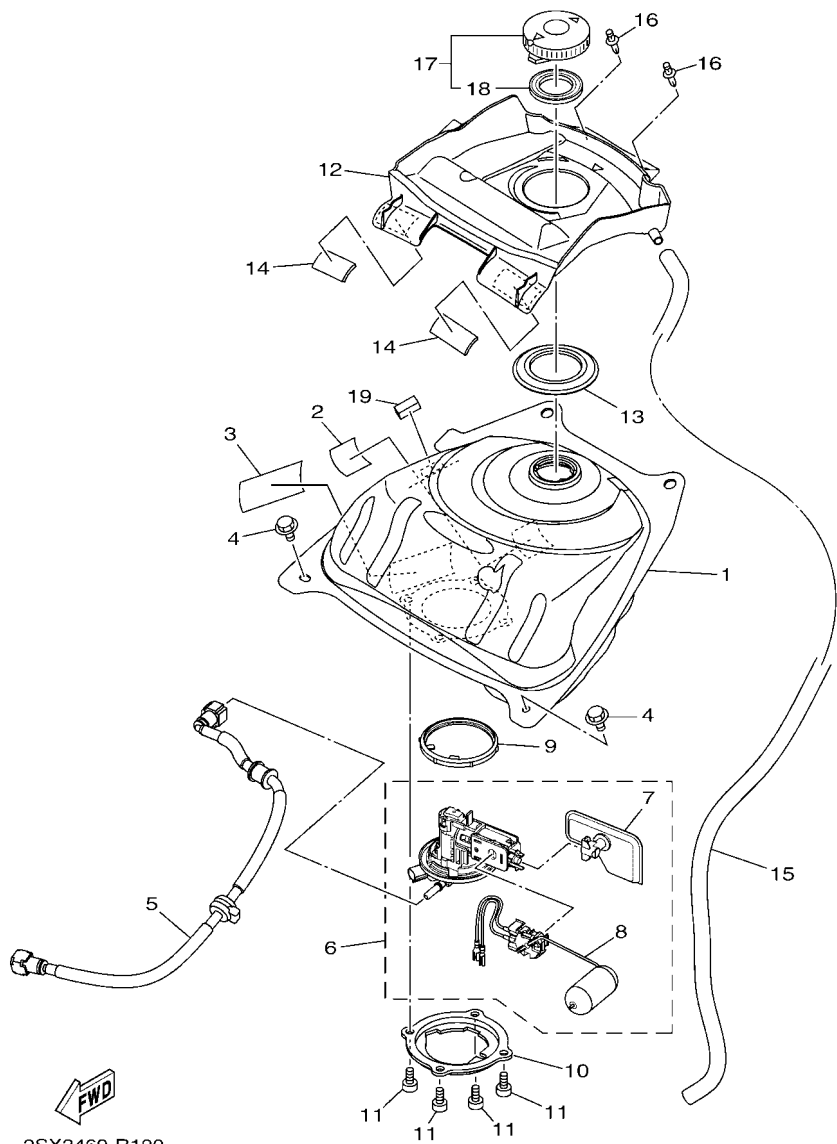


FIG. 18 STEERING

REF. NO.	PART NO.	DESCRIPTION	BF43				REMARKS
28	2WB-F3416-00	COVER, BALL RACE 2	1				
29	BF4-F3415-00	COVER, BALL RACE 1	1				
30	90179-25002	NUT	2				
31	BF4-F5875-00	HOLDER, BRAKE HOSE 1	1				
32	95D02-06010	BOLT, FLANGE DEEP RECESS	1				
33	1VB-F5876-00	HOLDER, BRAKE HOSE 2	1				
34	95D02-06010	BOLT, FLANGE DEEP RECESS	1				
35	BF4-F1164-00	HOLDER, CABLE	1				
36	95D02-06010	BOLT, FLANGE DEEP RECESS	1				




 2SX2460-R190

FIG. 19 FUEL TANK

REF. NO.	PART NO.	DESCRIPTION	BF43				REMARKS
1	B92-F4110-00	FUEL TANK COMP.	1				
2	5D9-F414G-10	SEAL	1				
3	5D9-F414G-00	SEAL	1				
4	90119-06155	BOLT, WITH WASHER	2				
5	2PH-E3971-01	PIPE, FUEL 1	1				
6	2PH-E3907-00	FUEL PUMP COMP.	1				
7	54P-E3915-00	.FILTER, FUEL SUCTION	1				
8	2PH-H5752-00	.SENDER UNIT ASSY, FUEL METER	1				
9	54P-F414G-10	SEAL	1				
10	B92-F4491-00	BRACKET, FUEL PUMP	1				
11	91332-05010	BOLT	4				
12	B92-F41B1-00	COVER, TANK	1				
13	B92-F414G-00	SEAL	1				
14	5D9-H2126-00	PAD, BATTERY	2				
15	91A20-07065	TUBE, FLEXIBLE VINYL	1				
16	90269-06816	RIVET	2				
17	4YY-F4610-00	CAP ASSY	1				
18	4YY-F4612-00	.PACKING, CAP	1				
19	90520-08812	DAMPER, PLATE	1				

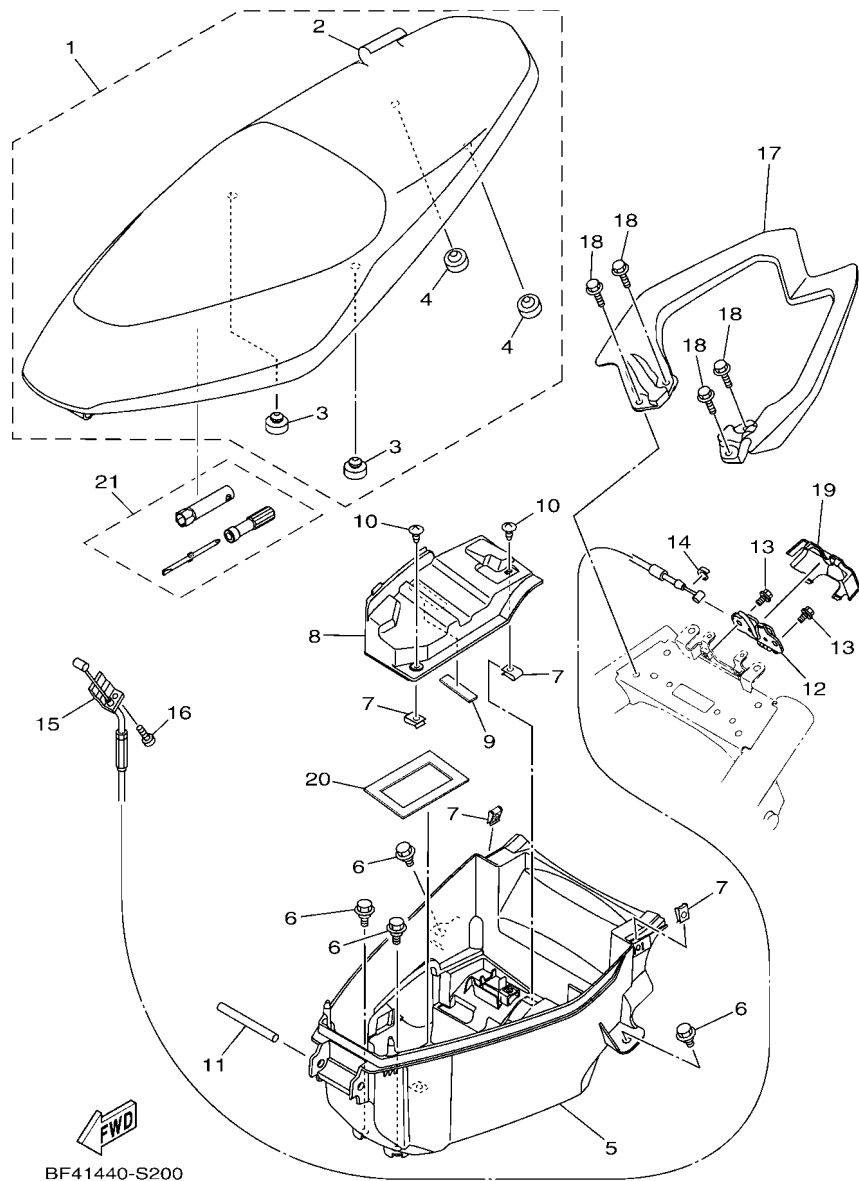
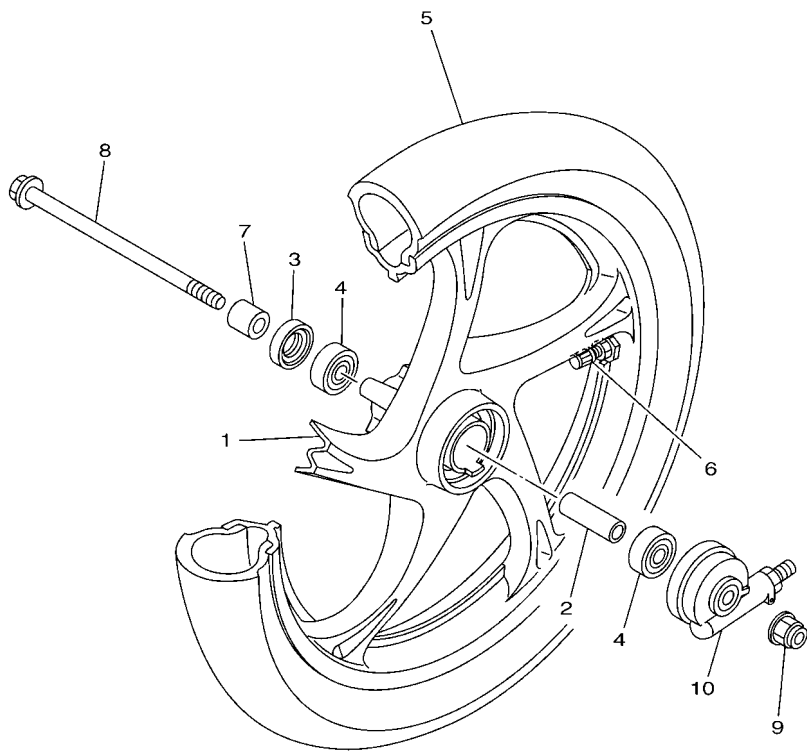


FIG. 20 SEAT

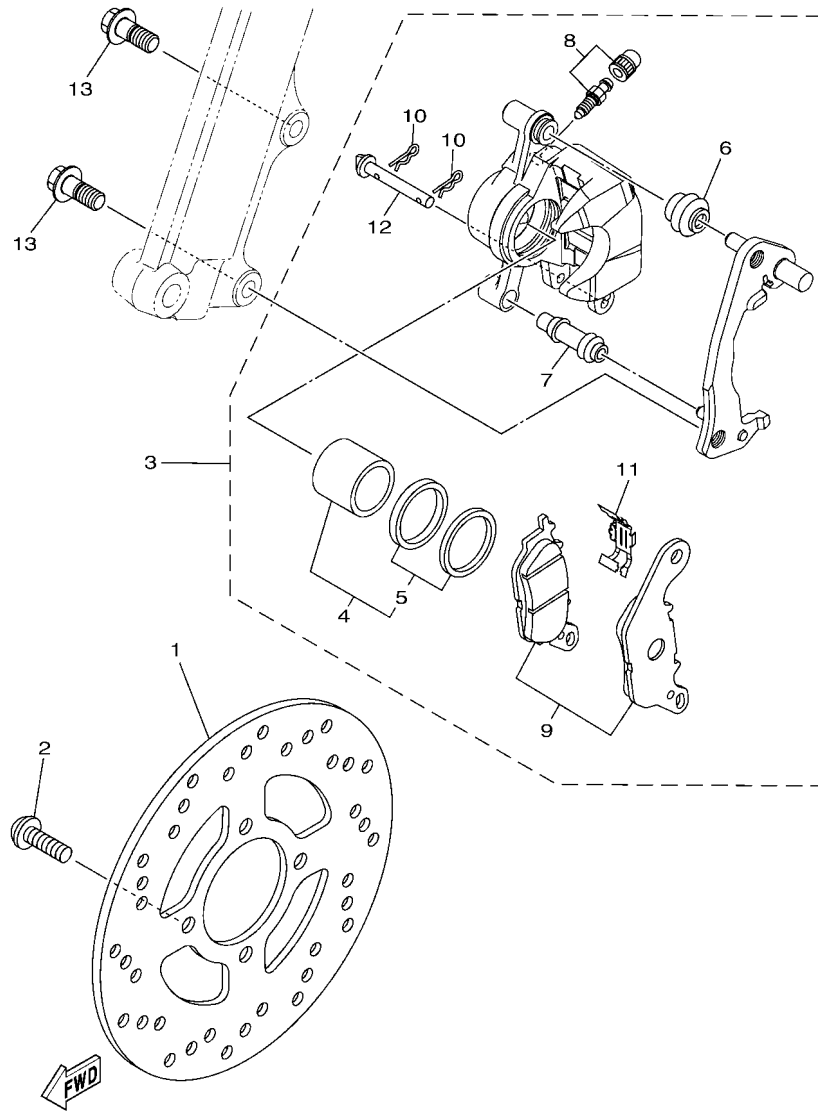
REF. NO.	PART NO.	DESCRIPTION	BF43				REMARKS
1	BF4-F4730-00	DOUBLE SEAT ASSY	1				
2	BF4-F470F-00	.SEAT COVER COMP.	1				
3	44P-F4741-00	.PAD, SEAT	2				
4	4HF-F4741-00	.PAD, SEAT	2				
5	BF4-F4704-00	BOX ASSY	1				
6	90109-068B4	BOLT	4				
7	90183-05807	NUT, SPRING	4				
8	BF4-H2129-00	COVER, BATTERY	1				
9	90520-03806	DAMPER, PLATE	1				
10	97707-50012	SCREW, TRUSS HEAD TAPPING	2				
11	2WB-F4727-00	PIN, SEAT FITTING	1				
12	40D-F4780-01	SEAT LOCK ASSY	1				
13	95E32-06010	BOLT, FLANGE DEEP RECESS	2				
14	1S8-F4768-00	STOPPER	1				
15	BF4-F478E-00	CABLE, SEAT LOCK	1				
16	98507-05010	SCREW, PAN HEAD	1				
17	BF4-F4773-00-P0	HANDLE, SEAT	1				UR FOR RM7,VPBC5,LYNM9
	BF4-F4773-00-P4	HANDLE, SEAT	1				UR FOR CM6
18	95D32-06020	BOLT, FLANGE DEEP RECESS	4				
19	B92-F472T-00	COVER, SEAT LOCK	1				
20	1VB-H2176-00	DAMPER	1				
21	1VB-F8100-00	TOOL KIT	1				

FIG. 21 FRONT WHEEL



REF. NO.	PART NO.	DESCRIPTION	BF43				REMARKS
1	1VB-F5168-00-33	CAST WHEEL, FRONT	1				YB
2	90560-10292	SPACER	1				
3	93106-20808	OIL SEAL	1				
4	93306-300X8	BEARING	2				
5	94107-14807	TIRE (70/90-14 M/C 34P V282F)	1				VEE RUBBER
6	93900-00817	VALVE, RIM (TR412)	1				
7	90387-10837	COLLAR	1				
8	2PH-F5181-00	AXLE, WHEEL	1				
9	95602-10200	NUT, S/L FLANGE	1				
10	5TL-F5190-01	GEAR UNIT ASSY	1				


BF42440-T210

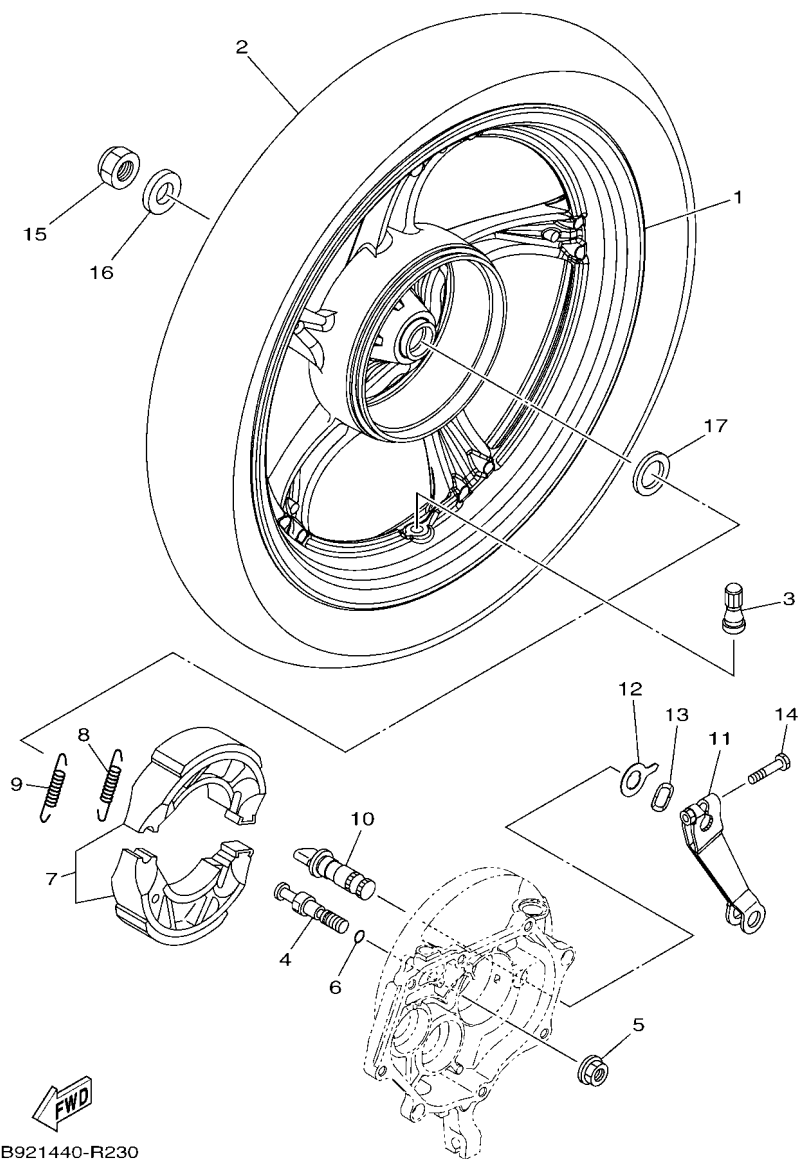


BF41440-S220

FIG. 22 FRONT BRAKE CALIPER

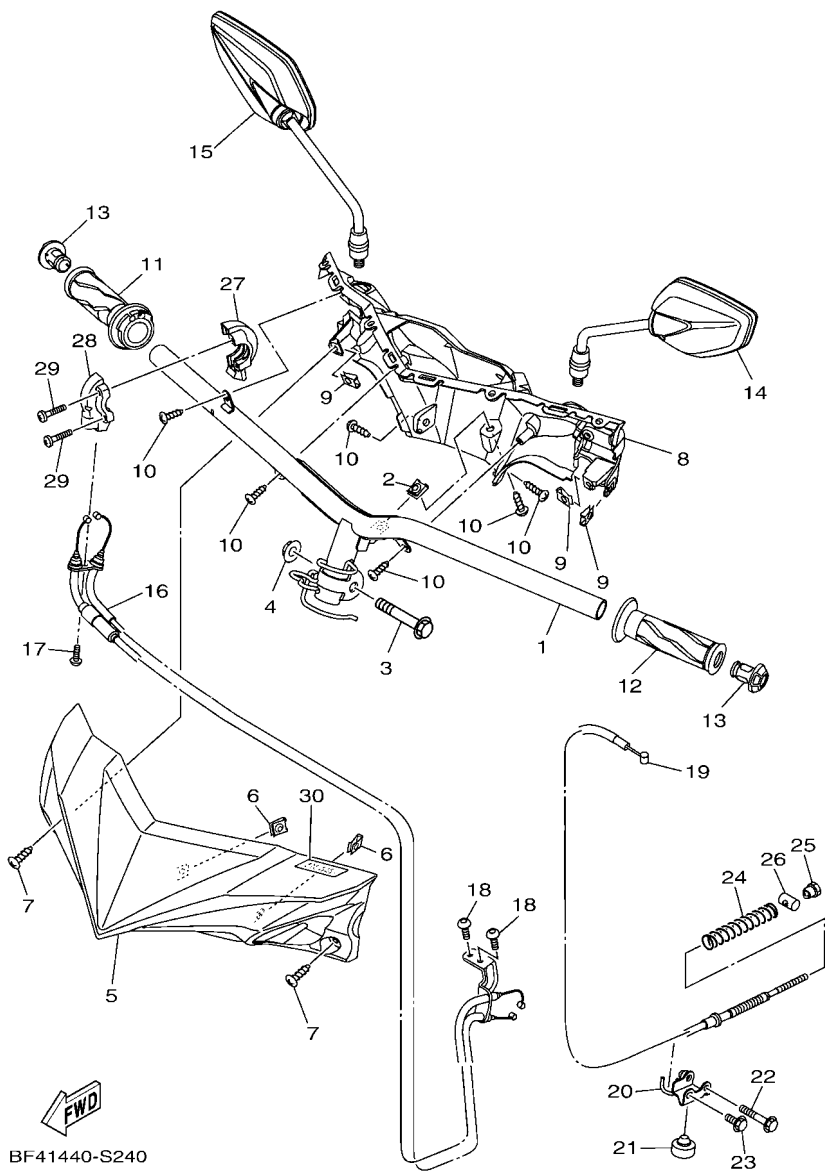
REF. NO.	PART NO.	DESCRIPTION	BF43				REMARKS
1	5TL-F582U-10	DISK, BRAKE (RIGHT)	1				
2	90111-08853	BOLT,HEX. SOCKET BUTTON	4				
3	2PH-F580U-10	CALIPER ASSY (RIGHT)	1				
4	2BM-F5802-00	.PISTON ASSY, CALIPER	1				
5	5YP-F5803-50	..CALIPER SEAL KIT	1				
6	2BM-F5917-00	.BOOT, CALIPER	1				
7	5YP-F5937-00	.BOOT 2	1				
8	4C9-W0048-00	.BLEED SCREW KIT	1				
9	2BM-F5805-00	.BRAKE PAD KIT	1				
10	5YP-F5925-01	.CLIP	2				
11	2BM-F5919-00	.SUPPORT, PAD	1				
12	5YP-F5924-10	.PIN, PAD	1				
13	90105-10831	BOLT, FLANGE	2				

FIG. 23 REAR WHEEL



REF. NO.	PART NO.	DESCRIPTION	BF43				REMARKS
1	44P-F5338-00-33	CAST WHEEL, REAR	1				YB
2	94108-14809	TIRE (80/90-14 M/C 46P V280R)	1				VEE RUBBER
3	93900-00817	VALVE, RIM (TR412)	1				
4	54P-F5326-00	PIN, PIVOT	1				UR Either can use
	1GC-F5326-00	PIN, PIVOT	1				UR Either can use
5	95702-10500	NUT, FLANGE	1				
6	93210-07802	O-RING	1				
7	5LW-F530K-00	BRAKE SHOE SET	1				
8	90506-12001	SPRING, TENSION	1				
9	90506-15001	SPRING, TENSION	1				
10	10C-F5351-00	CAMSHAFT	1				
11	B92-F5355-00	LEVER, CAMSHAFT	1				
12	5LW-F533A-00	PLATE, INDICATOR	1				
13	90206-14093	WASHER, WAVE	1				
14	90101-06046	BOLT	1				
15	90185-16800	NUT, SELF-LOCKING	1				
16	90201-16810	WASHER, PLATE	1				
17	90201-220J8	WASHER, PLATE	1				

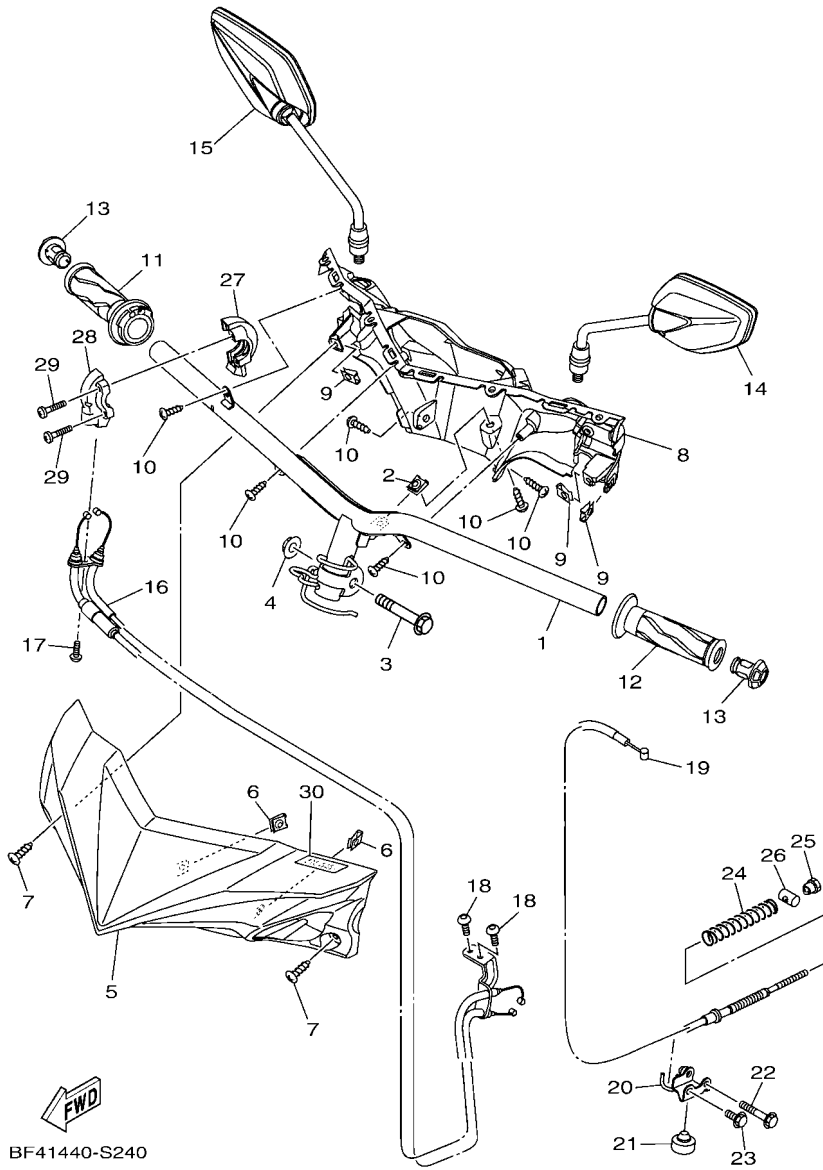
FIG. 24 STEERING HANDLE & CABLE



BF41440-S240

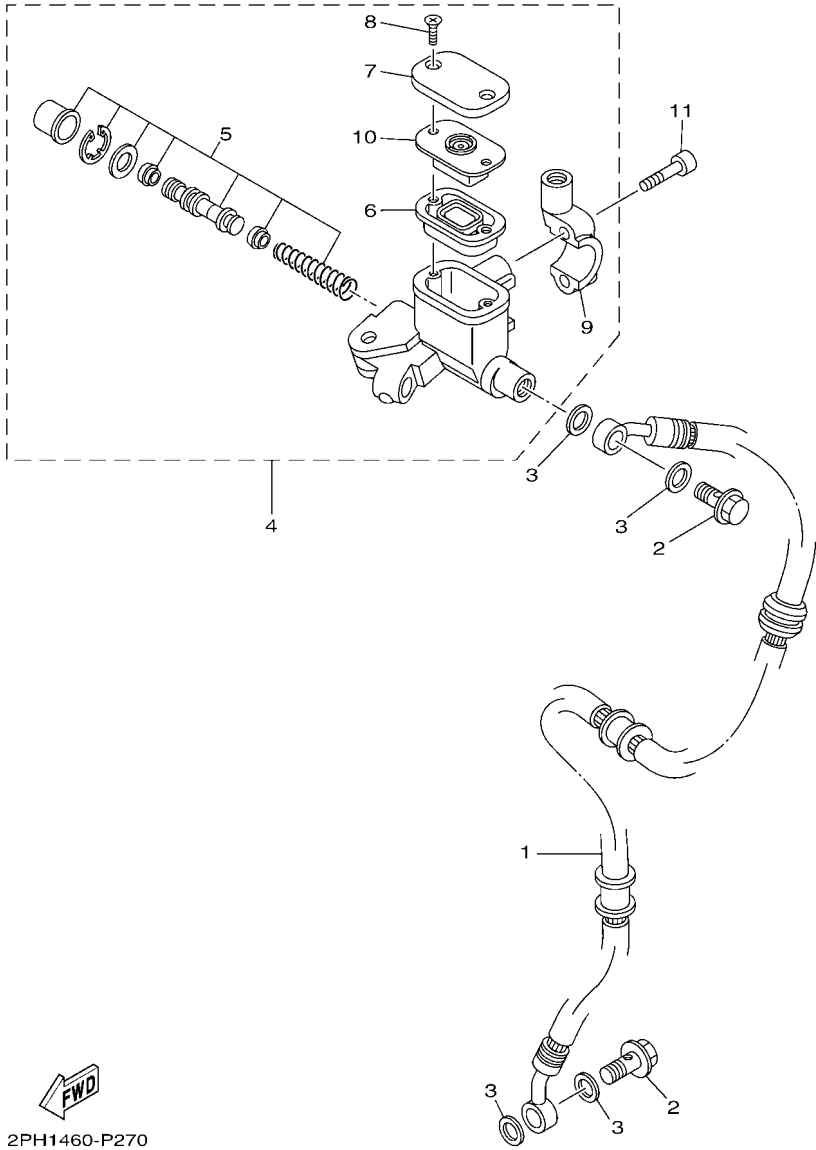
REF. NO.	PART NO.	DESCRIPTION	BF43				REMARKS
1	BF4-F6110-00	HANDLE COMP.	1				
2	90183-05807	NUT, SPRING	1				
3	90105-10896	BOLT, FLANGE	1				
4	90185-10011	NUT, SELF-LOCKING	1				
5	BF4-F6143-00-P0	COVER, HANDLE UPPER 1	1				UR FOR RM7
	BF4-F6143-00-P7	COVER, HANDLE UPPER 1	1				UR FOR VPBC5,LYNM9
	BF4-F6143-00-P8	COVER, HANDLE UPPER 1	1				UR FOR CM6
6	90183-05807	NUT, SPRING	2				
7	97707-50016	SCREW, TRUSS HEAD TAPPING	2				
8	BF4-F6145-00	COVER, HANDLE UPPER 2	1				
9	90183-05807	NUT, SPRING	3				
10	97707-50016	SCREW, TRUSS HEAD TAPPING	6				
11	B92-F6240-00	GRIP ASSY	1				
12	1VP-F6241-00	GRIP	1				
13	B92-F6246-00	END, GRIP	2				
14	2WB-F6280-00	REAR VIEW MIRROR ASSY (LEFT)	1				
15	2WB-F6290-00	REAR VIEW MIRROR ASSY (RIGHT)	1				
16	BF4-F6301-00	THROTTLE CABLE ASSY	1				
17	92012-05016	BOLT, BUTTON HEAD	1				
18	92012-05010	BOLT, BUTTON HEAD	2				
19	1VB-F6351-00	CABLE, BRAKE	1				
20	B92-F637G-00	HOLDER, WIRE	1				
21	B92-F6257-00	STOPPER	1				
22	95E32-06040	BOLT, FLANGE DEEP RECESS	1				
23	95E32-06014	BOLT, FLANGE DEEP RECESS	1				
24	90501-16003	SPRING, COMPRESSION	1				
25	90179-06411	NUT	1				

FIG. 24 STEERING HANDLE & CABLE



REF. NO.	PART NO.	DESCRIPTION	BF43				REMARKS
26	90249-12008	PIN	1				
27	5P2-F6281-00	CAP, GRIP UPPER	1				
28	5P2-F6282-00	CAP, GRIP UNDER	1				
29	98502-05025	SCREW, PAN HEAD	2				
30	B92-F1737-00	EMBLEM	1				

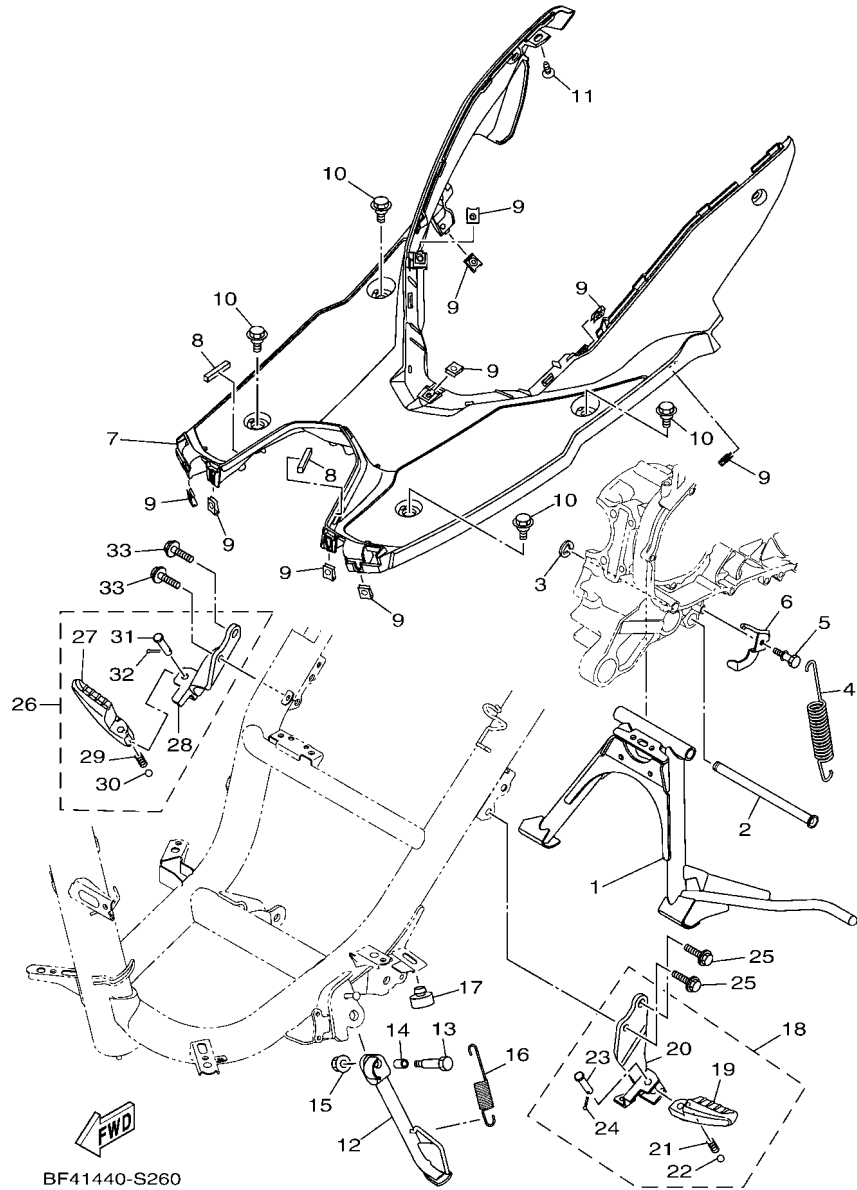
FIG. 25 FRONT MASTER CYLINDER




2PH1460-P270

REF. NO.	PART NO.	DESCRIPTION	BF43				REMARKS
1	2PH-F5872-10	HOSE, BRAKE 1	1				
2	90401-10015	BOLT, UNION	2				
3	90201-10118	WASHER, PLATE	4				
4	5P0-F583T-03	MASTER CYLINDER ASSY	1				
5	5P0-W0041-00	.CYLINDER KIT, MASTER	1				
6	5P0-F5854-00	.DIAPHRAGM, RESERVOIR	1				
7	5P0-F5852-00	.CAP, RESERVOIR	1				
8	36Y-2589H-00	.SCREW	2				
9	5TL-F5867-01	.BRACKET, MASTER CYLINDER	1				
10	5P0-F5855-00	.BUSH,DIAPHRAGM	1				
11	91312-06025	BOLT, HEXAGON SOCKET HEAD	2				

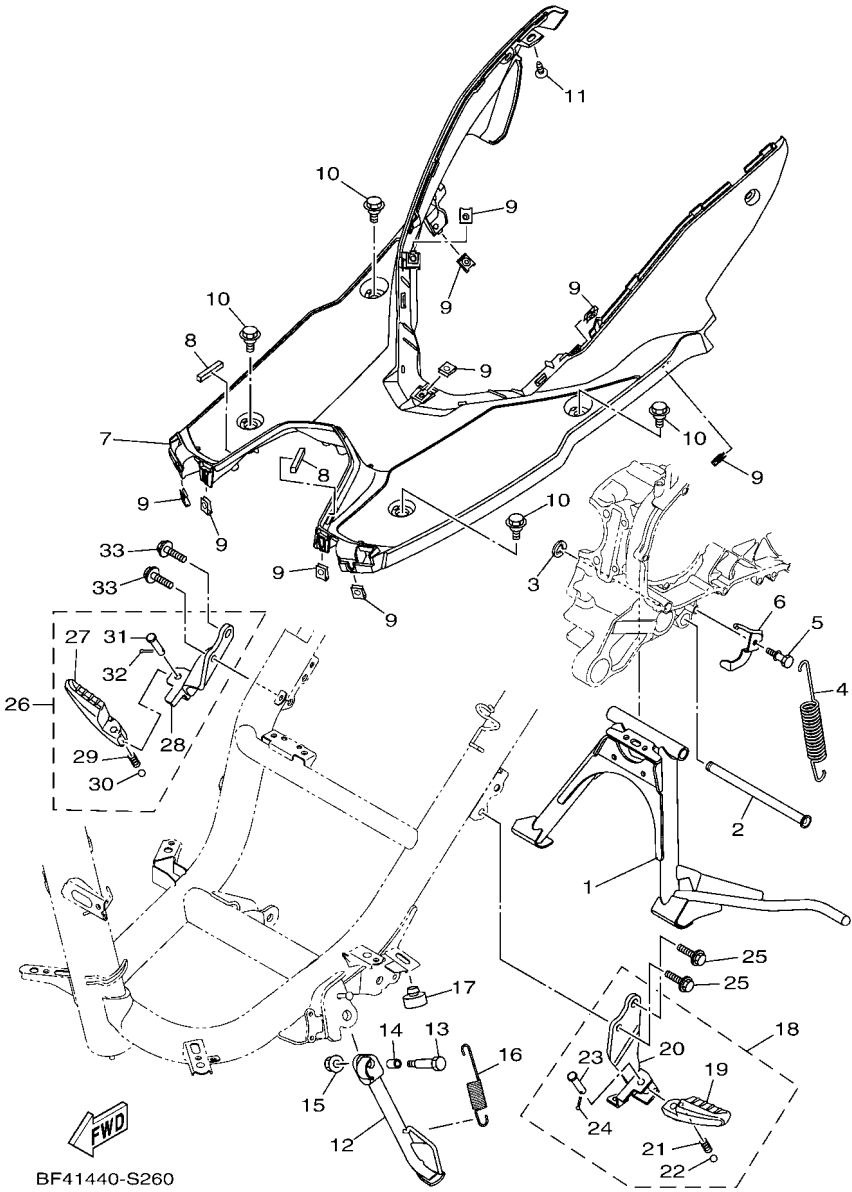
FIG. 26 STAND & FOOTREST



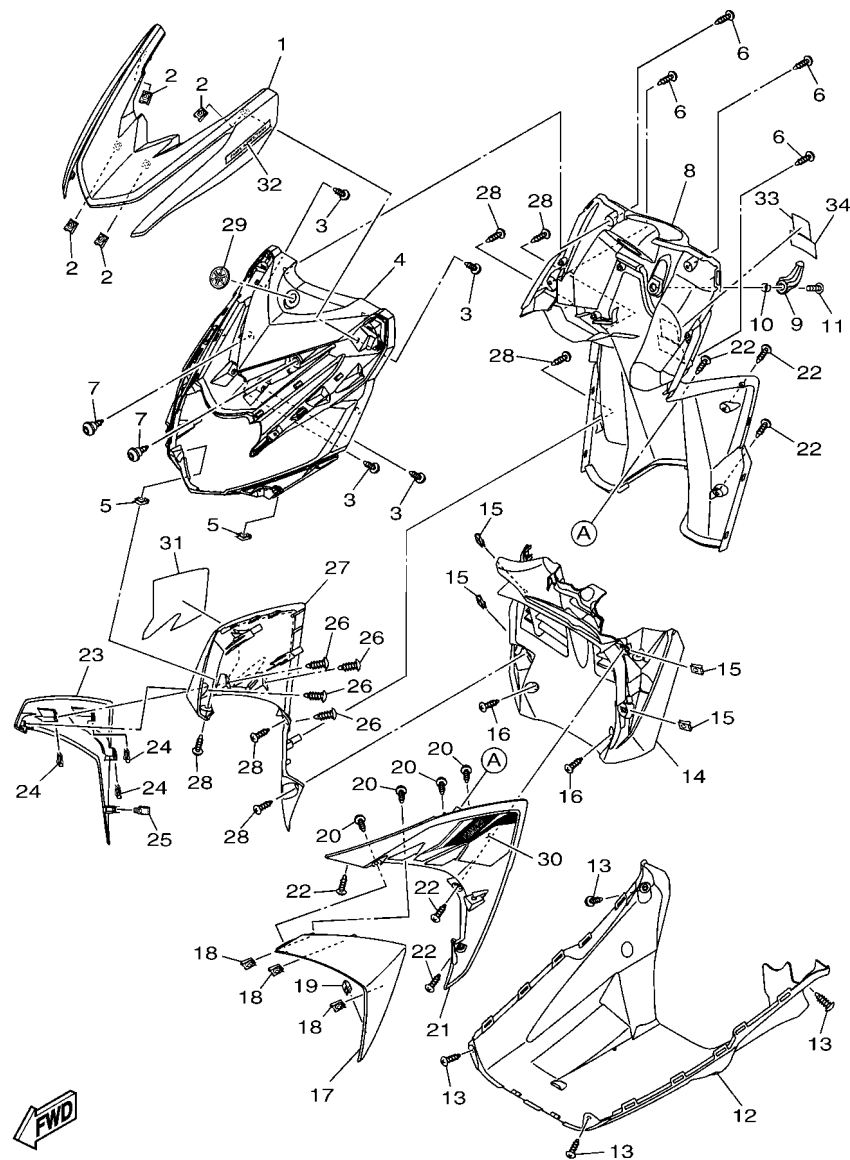
BF41440-S260

REF. NO.	PART NO.	DESCRIPTION	BF43	REMARKS
1	B92-F7111-00	STAND, MAIN	1	
2	2PH-F7112-00	SHAFT, MAIN STAND	1	
3	99002-09600	CIRCLIP	1	
4	90506-35821	SPRING, TENSION	1	
5	5LW-F7254-00	HOOK	1	
6	B92-F7267-00	GUIDE, WIRE	1	
7	BF4-F7481-00	BOARD, FOOTREST	1	
8	90520-08004	DAMPER, PLATE	2	
9	90183-05807	NUT, SPRING	9	
10	90109-068B5	BOLT	4	
11	97707-50016	SCREW, TRUSS HEAD TAPPING	1	
12	B92-F7311-00	STAND, SIDE	1	
13	90101-08847	BOLT	1	
14	90387-08820	COLLAR	1	
15	95602-08200	NUT, U FLANGE	1	
16	90506-20514	SPRING, TENSION	1	
17	B92-F6257-00	STOPPER	1	
18	B92-F7430-00	REAR FOOTREST ASSY 1	1	
19	B92-F7431-00	.FOOTREST, REAR 1	1	
20	B92-F7432-00	.BRACKET 1	1	
21	90501-12743	.SPRING, COMPRESSION	1	
22	93501-04823	.BALL	1	
23	91701-08035	.PIN	1	
24	91401-25015	.PIN, COTTER	1	
25	95D02-08030	BOLT, FLANGE DEEP RECESS	2	
26	B92-F7440-00	REAR FOOTREST ASSY 2	1	
27	B92-F7441-00	.FOOTREST, REAR 2	1	

FIG. 26 STAND & FOOTREST



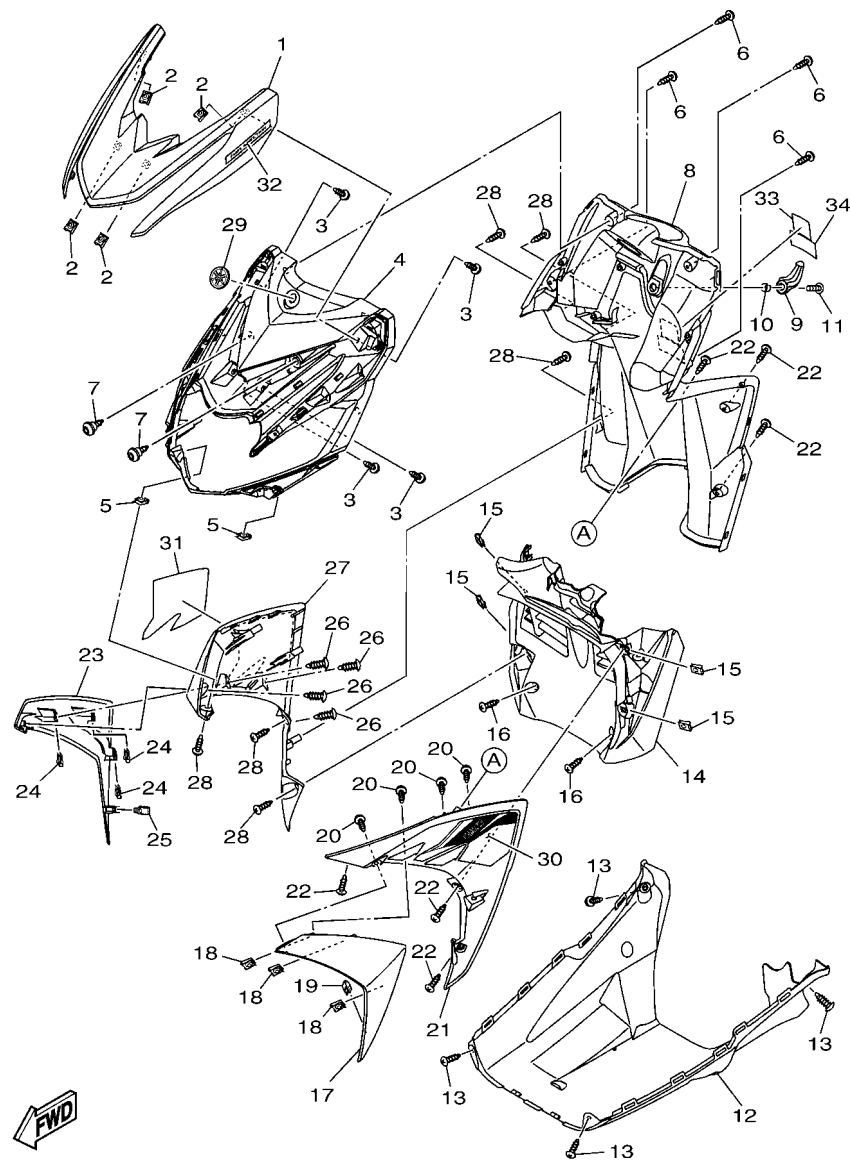
REF. NO.	PART NO.	DESCRIPTION	BF43				REMARKS
28	B92-F7442-00	.BRACKET 2	1				
29	90501-12743	.SPRING, COMPRESSION	1				
30	93501-04823	.BALL	1				
31	91701-08035	.PIN	1				
32	91401-25015	.PIN, COTTER	1				
33	95D02-08030	BOLT, FLANGE DEEP RECESS	2				



FWD
BF43440-V270

FIG. 27 LEG SHIELD

REF. NO.	PART NO.	DESCRIPTION	BF43				REMARKS
1	BF4-F3391-00-P0	PANEL, FRONT	1				UR FOR RM7
	BF4-F3391-00-P4	PANEL, FRONT	1				UR FOR VPBC5
	BF4-F3391-00-P7	PANEL, FRONT	1				UR FOR LYNM9
	BF4-F3391-00-P8	PANEL, FRONT	1				UR FOR CM6
2	90183-05807	NUT, SPRING	4				
3	97702-50014	SCREW, TAPPING	4				
4	BF4-F8311-00	LEG SHIELD 1	1				
5	90183-05807	NUT, SPRING	2				
6	97707-50016	SCREW, TRUSS HEAD TAPPING	4				
7	90109-068A3	BOLT	2				
8	BF4-F8300-00	LEG SHIELD ASSY	1				
9	B92-F8257-00	HOOK 1	1				
10	B92-F8373-00	COLLAR	1				
11	90111-06865	BOLT,HEX. SOCKET BUTTON	1				
12	B92-F8385-00	COVER, UNDER	1				
13	97707-50016	SCREW, TRUSS HEAD TAPPING	4				
14	BF4-F1552-00	FENDER, INNER	1				
15	90183-05807	NUT, SPRING	4				
16	97707-50016	SCREW, TRUSS HEAD TAPPING	2				
17	BF4-F8345-00	MOLE 1	1				
18	90183-05807	NUT, SPRING	3				
19	5P0-F8379-00	HOOK	1				
20	97707-50014	SCREW, TRUSS HEAD TAPPING	4				
21	BF4-F835U-00-P0	PANEL 1	1				UR FOR RM7
	BF4-F835U-00-P5	PANEL 1	1				UR FOR VPBC5
	BF4-F835U-00-P6	PANEL 1	1				UR FOR LYNM9
	BF4-F835U-00-P7	PANEL 1	1				UR FOR CM6



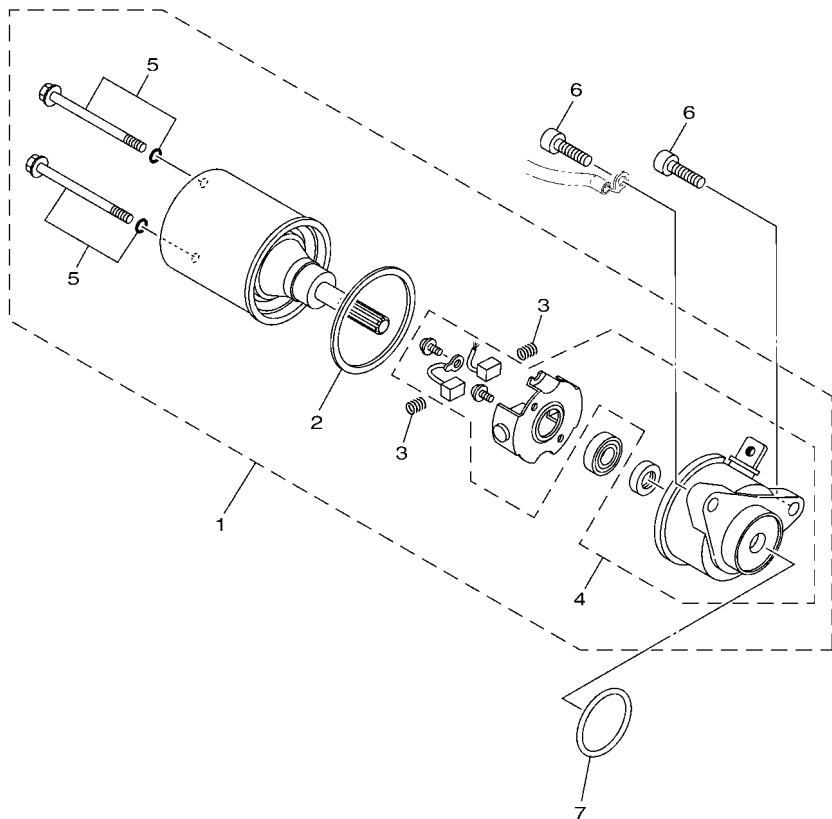
BF43440-V270

FIG. 27 LEG SHIELD

REF. NO.	PART NO.	DESCRIPTION	BF43				REMARKS
22	97707-50016	SCREW, TRUSS HEAD TAPPING	6				
23	BF4-F8346-00	MOLE 2	1				
24	90183-05807	NUT, SPRING	3				
25	5P0-F8379-00	HOOK	1				
26	97702-50014	SCREW, TAPPING	4				
27	BF4-F835V-00-P0	PANEL 2	1				UR FOR RM7
	BF4-F835V-00-P5	PANEL 2	1				UR FOR VPBC5
	BF4-F835V-00-P6	PANEL 2	1				UR FOR LYNM9
	BF4-F835V-00-P7	PANEL 2	1				UR FOR CM6
28	97707-50016	SCREW, TRUSS HEAD TAPPING	6				
29	5TL-F3108-00	EMBLEM	1				
30	BF4-F8391-80	GRAPHIC 1	1				UR FOR RM7
	BF4-F8391-90	GRAPHIC 1	1				UR FOR VPBC5
	BF4-F8391-A0	GRAPHIC 1	1				UR FOR LYNM9
	BF4-F8391-B0	GRAPHIC 1	1				UR FOR CM6
31	BF4-F8392-80	GRAPHIC 2	1				UR FOR RM7
	BF4-F8392-90	GRAPHIC 2	1				UR FOR VPBC5
	BF4-F8392-A0	GRAPHIC 2	1				UR FOR LYNM9
	BF4-F8392-B0	GRAPHIC 2	1				UR FOR CM6
32	BF4-F8393-80	GRAPHIC 3	1				UR FOR RM7
	BF4-F8393-90	GRAPHIC 3	1				UR FOR VPBC5
	BF4-F8393-A0	GRAPHIC 3	1				UR FOR LYNM9
	BF4-F8393-B0	GRAPHIC 3	1				UR FOR CM6
33	BF4-F1568-00	LABEL, WARNING	1				
34	BF4-F1668-00	LABEL, TIRE	1				

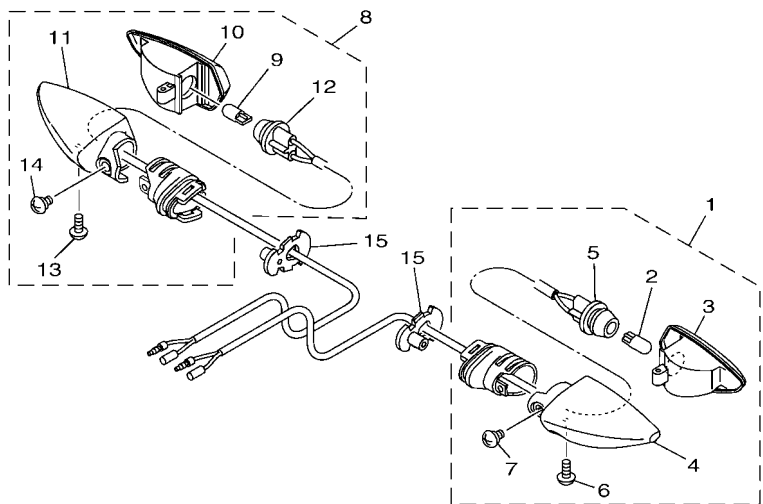
FIG. 29 STARTING MOTOR

REF. NO.	PART NO.	DESCRIPTION	BF43				REMARKS
1	2SX-H1890-00	MOTOR ASSY	1				
2	1KP-H1847-00	.O-RING	1				
3	1KP-H1617-00	.SPRING, BRUSH	2				
4	2SX-H1830-00	.FRONT BRACKET ASSY	1				
5	2SX-H1828-00	.BOLT 2	2				
6	91332-06020	BOLT	2				
7	93210-29803	O-RING	1				



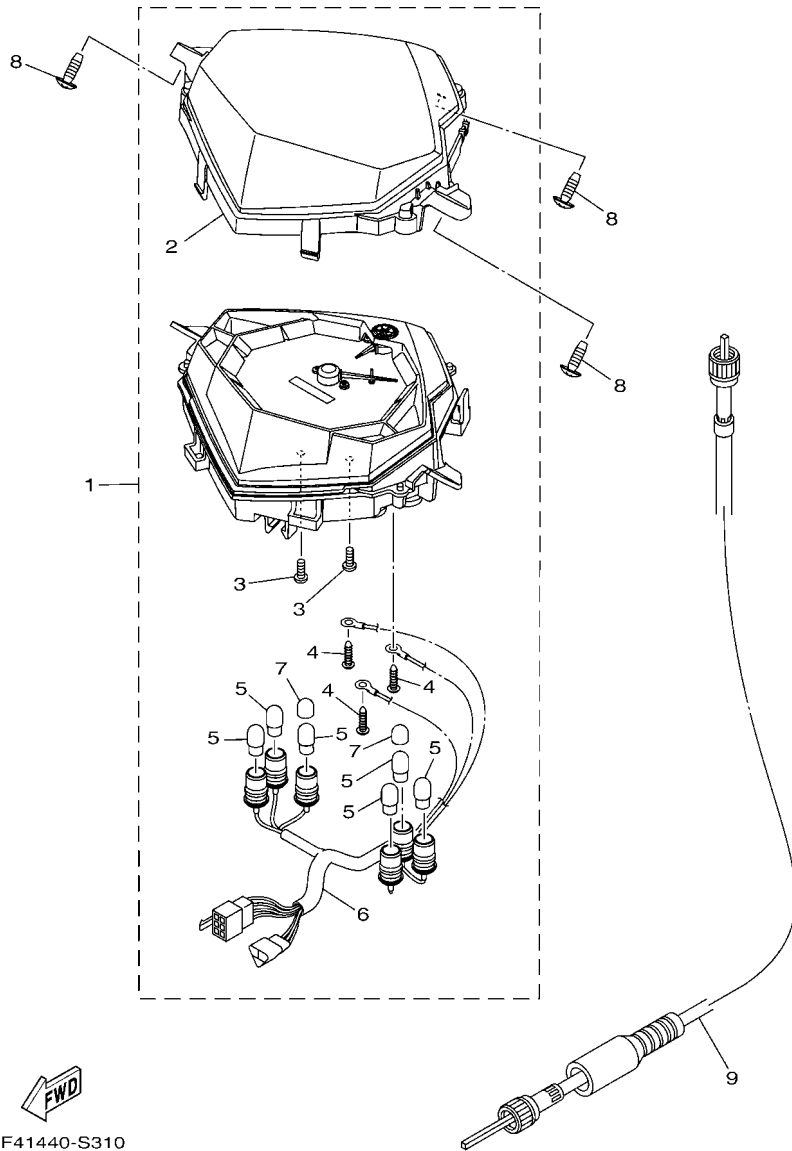
2SX1460-P290

FIG. 30 FLASHER LIGHT



REF. NO.	PART NO.	DESCRIPTION	BF43				REMARKS
1	55D-H3330-01	REAR FLASHER LIGHT ASSY 1	1				
2	55D-H3311-00	.BULB, FLASHER (12V-10W)	1				
3	55D-H333A-00	.LENS COMP 1	1				
4	55D-H3323-00	.BODY	1				
5	55D-H333E-01	.CORD ASSY	1				
6	55D-H3333-00	.SCREW, LENS FITTING	1				
7	55D-H3358-00	.SCREW, SPECIAL	1				
8	55D-H3340-01	REAR FLASHER LIGHT ASSY 2	1				
9	55D-H3311-00	.BULB, FLASHER (12V-10W)	1				
10	55D-H334A-00	.LENS COMP 2	1				
11	55D-H332M-00	.BODY 2	1				
12	55D-H334E-01	.CORD ASSY	1				
13	55D-H3333-00	.SCREW, LENS FITTING	1				
14	55D-H3358-00	.SCREW, SPECIAL	1				
15	1VP-H3318-00	STAY, FLASHER 1	2				


BF41440-S300

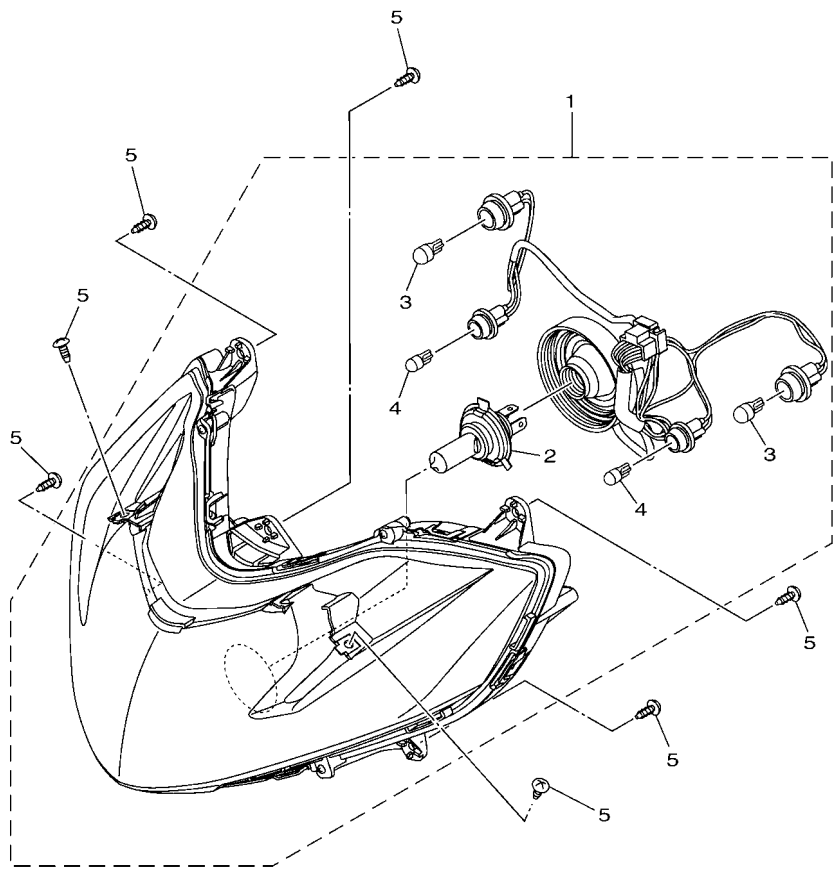



BF41440-S310

FIG. 31 METER

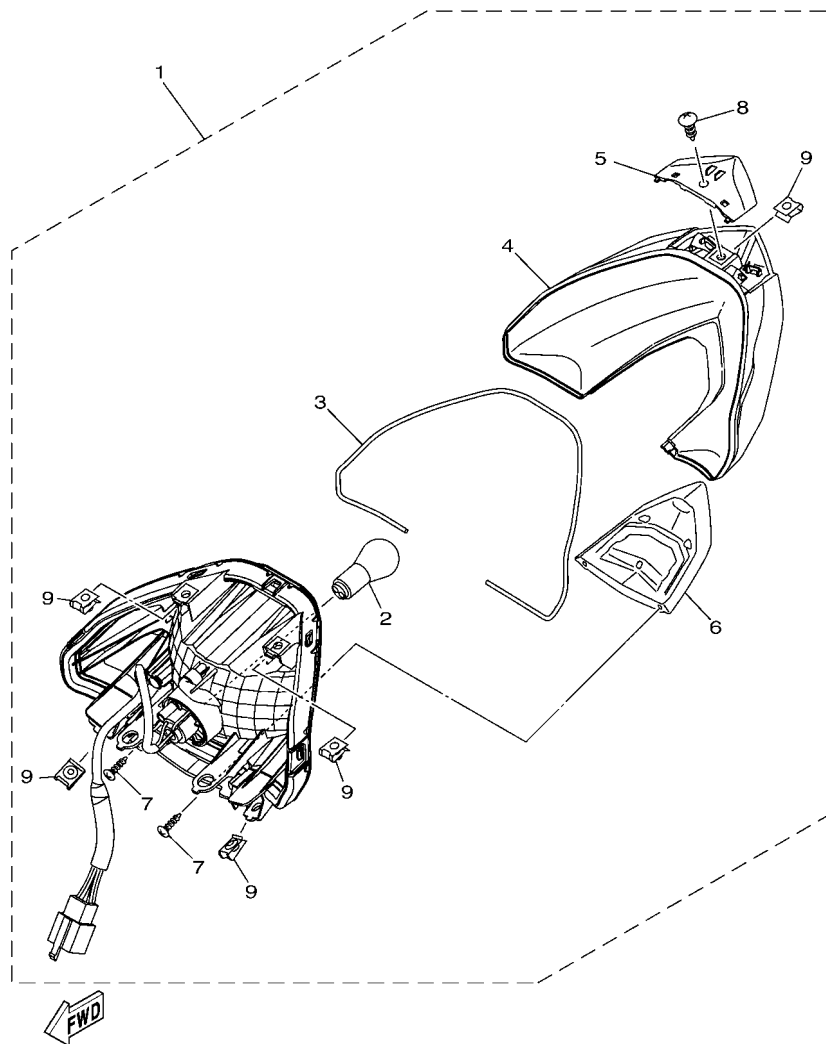
REF. NO.	PART NO.	DESCRIPTION	BF43				REMARKS
1	BF4-H3510-00	SPEEDOMETER ASSY	1				
2	BF4-H3511-00	.LENS, SPEEDOMETER	1				
3	1VP-H3358-00	.SCREW, SPECIAL	2				
4	1VP-H3645-00	.SCREW	3				
5	5LW-H3518-00	.BULB, METER (T10 12V-1.7W)	6				
6	BF4-H3509-00	.SOCKET CORD ASSY	1				
7	1VP-H3606-00	.CAP, BULB	2				
8	97707-50016	SCREW, TRUSS HEAD TAPPING	3				
9	2BR-H3550-00	SPEEDOMETER CABLE ASSY	1				

FIG. 32 HEADLIGHT



REF. NO.	PART NO.	DESCRIPTION	BF43				REMARKS
1	BF4-H4300-00	HEADLIGHT ASSY	1				
2	1VP-H4314-00	.BULB, HEADLIGHT (12V 35/35W)	1				
3	55D-H3311-00	.BULB, FLASHER (12V-10W)	2				
4	1VP-H4147-00	.BULB, FLASHER (12V-16W)	2				
5	97702-50014	SCREW, TAPPING	7				


BF41440-S320

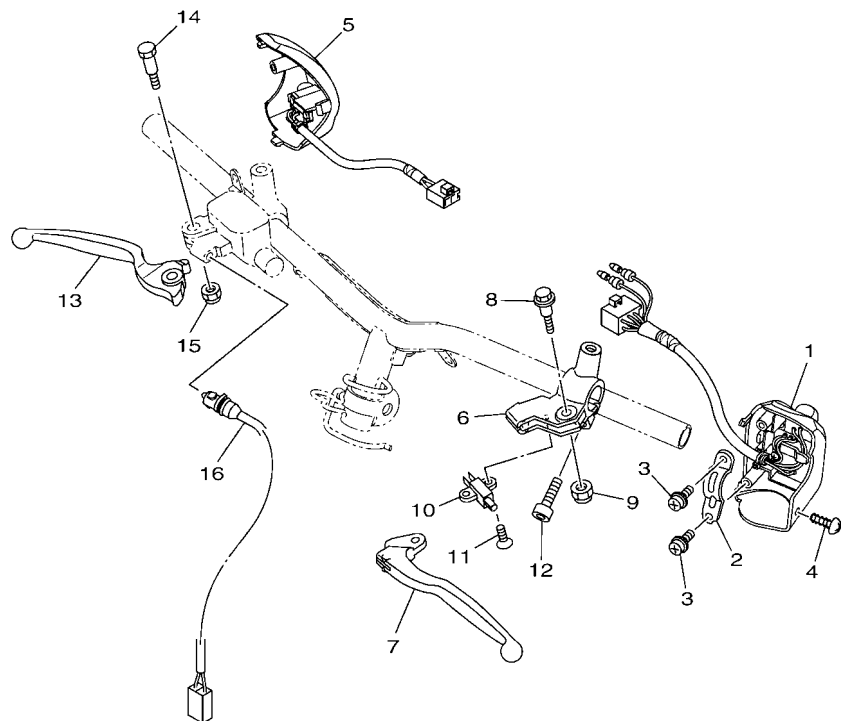


BF41440-S330

FIG. 33 TAILLIGHT

REF. NO.	PART NO.	DESCRIPTION	BF43				REMARKS
1	BF4-H4710-00	TAILLIGHT UNIT ASSY	1				
2	1VP-H4714-00	.BULB, TAILLIGHT (12V-21/5W)	1				
3	BF4-H4723-00	.GASKET, TAIL LENS	1				
4	BF4-H4721-00	.LENS, TAILLIGHT	1				
5	BF4-H4516-00	.COVER, TAILLIGHT	1				
6	BF4-H4716-00	.COVER, TAILLIGHT	1				
7	97702-03012	.SCREW, TAPPING	2				
8	97707-50012	.SCREW, TRUSS HEAD TAPPING	1				
9	90183-05807	.NUT, SPRING	5				

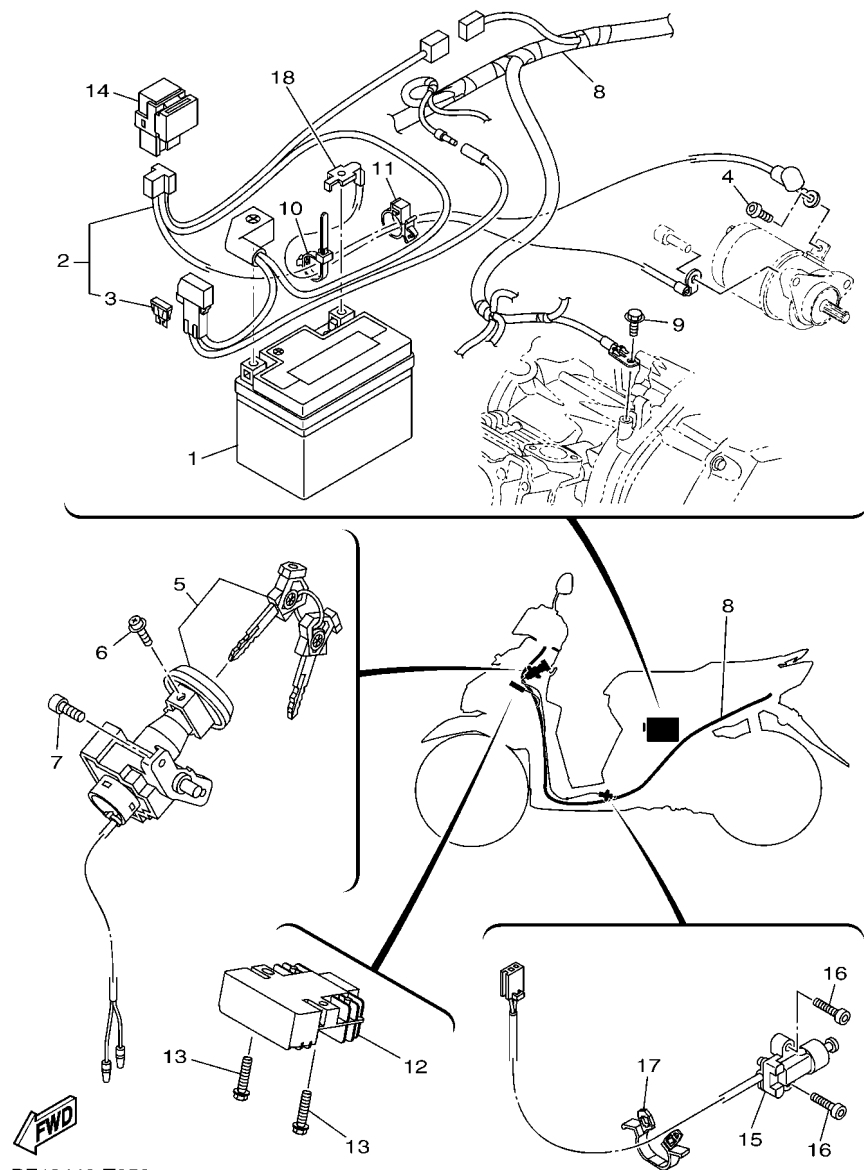
FIG. 34 HANDLE SWITCH & LEVER



REF. NO.	PART NO.	DESCRIPTION	BF43				REMARKS
1	1KP-H3973-10	SWITCH, HANDLE 3	1				
2	1S8-H3955-01	BRACKET 1	1				
3	97602-05216	SCREW, PAN HEAD WITH WASHER	2				
4	97707-50016	SCREW, TRUSS HEAD TAPPING	1				
5	1KP-H3976-10	SWITCH, HANDLE 1	1				
6	5TL-H2911-20	HOLDER, LEVER 1	1				
7	5TL-H3912-20	LEVER 1	1				
8	90109-06814	BOLT	1				
9	95602-06100	NUT, SELF-LOCKING	1				
10	5TL-H3980-10	FRONT STOP SWITCH ASSY	1				
11	9870M-03008	SCREW, FLAT HEAD	1				
12	91332-06020	BOLT	1				
13	5TL-H3922-00	LEVER 2	1				
14	90109-06255	BOLT	1				
15	95602-06100	NUT, SELF-LOCKING	1				
16	54P-H3980-00	FRONT STOP SWITCH ASSY	1				

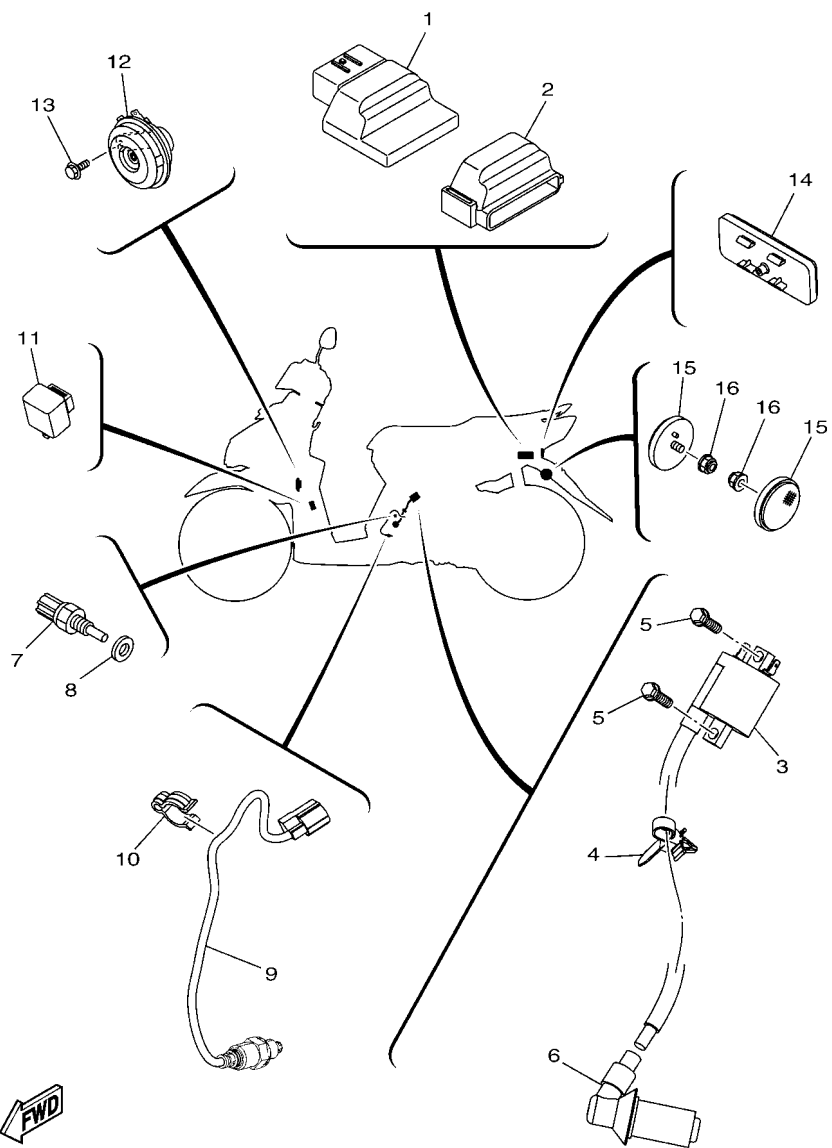

BF41440-S340

FIG. 35 ELECTRICAL 1



REF. NO.	PART NO.	DESCRIPTION	BF43	REMARKS
1	2CB-H2100-01	BATTERY ASSY (YUASA YTZ4V)	1	UR
	55D-H2100-00	BATTERY ASSY (PINACO PTZ5S)	1	UR
2	BF4-H2115-00	WIRE, PLUS LEAD	1	
3	1VP-H2151-00	.FUSE (15A)	1	
4	92012-05008	BOLT, BUTTON HEAD	1	
5	1VB-XH250-01	MAIN SW. STRG. LOCK SUB ASSY	1	
6	97602-05208	SCREW, PAN HEAD WITH WASHER	1	
7	90149-06309	SCREW	2	
8	BF4-H2590-00	WIRE HARNESS ASSY	1	
9	95E32-06012	BOLT, FLANGE DEEP RECESS	1	
10	90464-34002	CLAMP	1	
11	90464-16006	CLAMP	1	
12	2BL-H1960-00	RECTIFIER & REGULATOR ASSY	1	
13	95E32-06025	BOLT, FLANGE DEEP RECESS	2	
14	2PH-H1940-01	STARTER RELAY ASSY	1	
15	1LB-H2566-01	SWITCH, SIDE STAND	1	
16	91312-05016	BOLT, HEXAGON SOCKET HEAD	2	
17	90464-07805	CLAMP	1	
18	BF4-H2116-00	WIRE, MINUS LEAD	1	

FIG. 36 ELECTRICAL 2



BF42440-T360

REF. NO.	PART NO.	DESCRIPTION	BF43				REMARKS
1	2SX-H591A-00	ENGINE CONTROL UNIT ASSY	1				
2	2PH-H5546-00	BAND	1				
3	2PH-H2310-00	IGNITION COIL ASSY	1				
4	90464-12810	CLAMP	1				
5	95E32-06020	BOLT, FLANGE DEEP RECESS	2				
6	2PH-H2370-10	PLUG CAP ASSY	1				
7	54P-H3591-00	THERMO UNIT	1				
8	90430-10806	GASKET	1				
9	2DP-H592A-20	SENSOR, OXYGEN	1				
10	90464-16807	CLAMP	1				
11	1VP-83350-00	FLASHER RELAY ASSY	1				
12	2BR-H3371-00	HORN	1				
13	95D02-06010	BOLT, FLANGE DEEP RECESS	1				
14	55D-H5130-00	REAR REFLECTOR ASSY	1				
15	2FC-H5111-00	REFLECTOR, 1	2				
16	90185-05803	NUT, SELF-LOCKING	2				

NUMERICAL INDEX

PART NO.	REF. NO.	PART NO.	REF. NO.	PART NO.	REF. NO.	PART NO.	REF. NO.	PART NO.	REF. NO.	PART NO.	REF. NO.
1PM-14216-00	7 - 19	54P-E2231-00	4 - 10	2PH-E5191-10	10 - 7	2PH-E7421-00	13 - 3	BF4-F173F-A0	16 - 23	B92-F4110-00	19 - 1
5LW-15659-01	10 - 6	2PH-E2241-00	4 - 11	2PH-E5316-00	10 - 13	2PH-E7421-10	13 - 3	BF4-F173F-B0	16 - 23	5D9-F414G-00	19 - 2
36Y-2589H-00	25 - 8	2PH-E2611-10	5 - 10	54P-E5351-00	6 - 4	2PH-E7465-00	12 - 13	BF4-F1741-00	16 - 15		19 - 3
1VP-83350-00	36 - 11	2PH-E2651-00	5 - 1	2PH-E5362-10	9 - 19	2PH-E7465-10	12 - 14	BF4-F174G-80	16 - 24	B92-F414G-00	19 - 13
B92-E1102-00	1 - 1	2PH-E2652-00	5 - 3	5LW-E5363-00	9 - 16	2SX-E7611-10	12 - 6	BF4-F174G-90	16 - 24	54P-F414G-10	19 - 9
2PH-E111F-00	4 - 4	2PH-E2653-00	5 - 4	54P-E5371-00	9 - 6	2PH-E7620-00	12 - 1	BF4-F174G-A0	16 - 24	5D9-F414G-10	19 - 2
2BM-E111G-00	1 - 12	2PH-E2658-00	5 - 2		10 - 3	2PH-E7623-00	12 - 3	BF4-F174G-B0	16 - 24	B92-F41B1-00	19 - 12
2PH-E112F-00	4 - 5	2PH-E2659-10	5 - 6	2PH-E5373-00	9 - 7	2SX-E7632-10	12 - 2	BF4-F174H-80	16 - 25	B92-F4491-00	19 - 10
1DR-E1133-10	1 - 2	2SX-E2659-10	5 - 6	2SX-E5373-00	9 - 7	2PH-E7641-00	12 - 25	BF4-F174H-90	16 - 25	4YY-F4610-00	19 - 17
2PH-E1165-00	1 - 8	2PH-E2668-10	5 - 7	2PH-E5407-00	10 - 16	2PH-E7644-00	12 - 19	BF4-F174H-A0	16 - 25	4YY-F4612-00	19 - 18
2PH-E1166-10	7 - 36	2PH-E3300-10	6 - 1	B92-E5411-00	10 - 1	2PH-E7645-10	12 - 30	BF4-F174H-B0	16 - 25	BF4-F4704-00	20 - 5
2SX-E1166-10	7 - 36	2BM-E3324-10	2 - 8	2PH-E5413-00	10 - 19	2PH-E7653-00	12 - 4	54P-F2141-00	14 - 8	BF4-F470F-00	20 - 2
2PH-E1169-00	1 - 9	54P-E3411-00	6 - 5	2PH-E5417-00	9 - 21	BJ8-E7660-00	12 - 11	10C-F2210-30	17 - 1	2WB-F472T-00	20 - 11
2BL-E1181-00	1 - 16	5LW-E3452-00	2 - 6	2PH-E5421-00	9 - 34	2PH-E7664-00	12 - 15	5MX-F2216-00	9 - 4	B92-F472T-00	20 - 19
2PH-E1191-00	1 - 7	BF4-E3475-00	6 - 2	2PH-E5423-00	9 - 28	2PH-E7668-00	12 - 20	1VB-F3100-01	18 - 1	BF4-F4730-00	20 - 1
2BM-E1193-00	1 - 13	2PH-E3556-10	7 - 3	2PH-E5451-10	10 - 2	BJ8-E7670-00	12 - 12	5TL-F3108-00	27 - 29	44P-F4741-00	20 - 3
2PH-E119E-10	1 - 11	2PH-E3557-10	7 - 14	2PH-E5453-10	9 - 24	2PH-E7674-00	12 - 5	5VW-F3110-00	18 - 8	4HF-F4741-00	20 - 4
2PH-E1311-10	1 - 20	5LW-E3569-00	5 - 12	2PH-E5461-10	9 - 35	2PH-E7674-10	12 - 16	5VW-F3111-00	18 - 19	1S8-F4768-00	20 - 14
2PH-E1351-10	1 - 21	2PH-E3585-10	7 - 1	2PH-E5471-00	10 - 12	2PH-E7678-00	12 - 21	1VB-F3126-00	18 - 5	BF4-F4773-00-P0	20 - 17
2PH-E1400-31	2 - 1	2PH-E3593-00	7 - 5	2PH-E5472-00	10 - 14	2PH-E7678-10	12 - 23	1VB-F3136-00	18 - 2	BF4-F4773-00-P4	20 - 17
2PH-E1400-60	2 - 1	2PH-E3595-00	7 - 2	2PH-E5473-00	10 - 11	2PH-E7683-00	12 - 17	1VB-F3141-00	18 - 15	40D-F4780-01	20 - 12
2PH-E1422-10	2 - 5	2PH-E3750-00	7 - 17	2PH-E5495-00	10 - 15	2PH-E7684-00	12 - 18	5LL-F3144-00	18 - 14	BF4-F478E-00	20 - 15
2PH-E1422-20	2 - 5	2PH-E3761-10	7 - 9	2BM-E5512-00	11 - 4	BF4-F1110-00	14 - 1	4UV-F3145-00	18 - 3	1VB-F5168-00-33	21 - 1
2PH-E1603-10	2 - 13	5LW-E3769-00	9 - 20	2PH-E5520-20	11 - 1	BF4-F1164-00	18 - 35		18 - 6	2PH-F5181-00	21 - 8
2PH-E1631-00	2 - 10	2PH-E3770-10	7 - 8	1GC-E5521-00	11 - 5	2PH-F1410-20	14 - 3	2JG-F3147-00	18 - 20	5TL-F5190-01	21 - 10
2PH-E1633-00	2 - 11	2PH-E3907-00	19 - 6	44D-E5521-00	11 - 5	54P-F1459-00	14 - 5	31D-F3152-00	18 - 11	5LW-F530K-00	23 - 7
2PH-E1651-20	2 - 4	54P-E3915-00	19 - 7	2PH-E5570-00	11 - 2	BF4-F1511-00-P0	15 - 1	5P0-F3156-00	18 - 4	1GC-F5326-00	23 - 4
2BM-E1681-10	2 - 2	54P-E3938-00	7 - 12	2PH-E5570-11	11 - 2	BF4-F1511-00-P7	15 - 1		18 - 7	54P-F5326-00	23 - 4
2PH-E2111-00	3 - 1	2PH-E3971-01	19 - 5	1GC-E5598-00	11 - 3	BF4-F1511-00-P8	15 - 1	2JG-F3157-00	18 - 10	44P-F5338-00-33	23 - 1
54P-E2113-00	3 - 4	54P-E4137-00	7 - 13	44D-E5598-00	11 - 3	BF4-F1511-00-P9	15 - 1	509-F3158-L0	18 - 12	5LW-F533A-00	23 - 12
1KP-E2117-00	3 - 6	2PH-E4146-00	7 - 20	2PH-E5601-10	11 - 6	BF4-F1552-00	27 - 14	4D0-F3165-00	18 - 22	10C-F5351-00	23 - 10
54P-E2117-00	3 - 6	54P-E4147-00	7 - 10	2BL-E5620-10	11 - 12	BF4-F1568-00	27 - 33	1VB-F3170-00	18 - 9	B92-F5355-00	23 - 11
5TL-E2118-00	3 - 5	5CA-E4147-00	7 - 11	2PH-E5630-00	11 - 14	BF4-F1611-00	15 - 3	31B-F3181-00	18 - 13	2BM-F5802-00	22 - 4
54P-E2119-00	3 - 3	2PH-E4411-00	7 - 21	5MX-E5657-00	12 - 32	B92-F1621-00	15 - 5	4D0-F3340-00	18 - 16	5YP-F5803-50	22 - 5
2PH-E2121-10	3 - 2	2PH-E4412-00	7 - 22	1GC-E5659-00	10 - 6	BF4-F1668-00	27 - 34	4D0-F3346-00	18 - 18	2BM-F5805-00	22 - 9
2PH-E2126-00	3 - 7	2PH-E4437-00	7 - 23	5MX-E5673-00	11 - 15	BF4-F1711-00-P6	16 - 5	1VB-F334G-00	18 - 21	2PH-F580U-10	22 - 3
2PH-E2146-00	3 - 11	4ST-E443E-00	10 - 4	2PH-E5744-00	12 - 22	BF4-F171A-00	16 - 3	BF4-F3391-00-P0	27 - 1	5TL-F582U-10	22 - 1
2PH-E2151-01	3 - 8	5TL-E443E-00	7 - 30	2PH-E6111-00	13 - 9	BF4-F171E-00	16 - 20	BF4-F3391-00-P4	27 - 1	5P0-F583T-03	25 - 4
33S-E2159-01	3 - 10	5TP-E443G-00	7 - 27	2PH-E6111-10	13 - 9	BF4-F1721-00-P6	16 - 8	BF4-F3391-00-P7	27 - 1	5P0-F5852-00	25 - 7
33S-E2159-10	3 - 10	2PH-E4450-20	7 - 24	2PH-E6523-00	12 - 9	BF4-F172W-00	16 - 1	BF4-F3391-00-P8	27 - 1	5P0-F5854-00	25 - 6
2PH-E2170-00	4 - 1	2PH-E4452-00	7 - 26	2PH-E6611-00	12 - 24	BF4-F1731-00	16 - 11	156-F3411-00	18 - 17	5P0-F5855-00	25 - 10
2PH-E2176-01	4 - 8	2PH-E4453-00	7 - 25	BJ8-E6620-00	12 - 7	B92-F1737-00	24 - 30	4RT-F3411-10	18 - 26	5TL-F5867-01	25 - 9
2BM-E2210-10	4 - 12	B92-E4613-00	8 - 4	2PH-E6626-00	12 - 8	BF4-F173E-80	16 - 22	1KL-F3412-10	18 - 23	2PH-F5872-10	25 - 1
2BM-E2210-20	4 - 12	B92-E4711-00	8 - 1	2PH-E6819-00	12 - 10	BF4-F173E-90	16 - 22	4RT-F3412-10	18 - 25	BF4-F5875-00	18 - 31
2PH-E2213-10	4 - 14	B92-E4718-00	8 - 2	2PH-E7211-00	13 - 4	BF4-F173E-A0	16 - 22	BF4-F3415-00	18 - 29	1VB-F5876-00	18 - 33
5MX-E2222-00	4 - 13	2PH-E5113-00	9 - 18	2PH-E7211-10	13 - 4	BF4-F173E-B0	16 - 22	2WB-F3416-00	18 - 28	2BM-F5917-00	22 - 6
52B-E2228-00	4 - 16	2PH-E5150-00	9 - 1	2PH-E7410-00	13 - 1	BF4-F173F-80	16 - 23	1P6-F341E-10	18 - 27	2BM-F5919-00	22 - 11
54P-E2228-00	4 - 16	2PH-E5155-00	9 - 2	2PH-E7410-10	13 - 1	BF4-F173F-90	16 - 23	5VL-F341E-10	18 - 24	5YP-F5924-10	22 - 12

NUMERICAL INDEX

PART NO.	REF. NO.	PART NO.	REF. NO.	PART NO.	REF. NO.	PART NO.	REF. NO.	PART NO.	REF. NO.	PART NO.	REF. NO.
5YP-F5925-01	22 - 10	BF4-F835V-00-P7	27 - 27	55D-H333A-00	30 - 3	90105-10896	24 - 3	90201-12823	28 - 5	90520-05819	5 - 5
5YP-F5937-00	22 - 7	B92-F8373-00	27 - 10	55D-H333E-01	30 - 5	90105-108B2	14 - 7	90201-154E8	11 - 9	90520-08004	26 - 8
BF4-F6110-00	24 - 1	5P0-F8379-00	27 - 19	55D-H3340-01	30 - 8	90109-06255	34 - 14	90201-15846	12 - 35	90520-08809	14 - 13
BF4-F6143-00-P0	24 - 5		27 - 25	55D-H334A-00	30 - 10	90109-06814	34 - 8	90201-16810	23 - 16	90520-08812	19 - 19
BF4-F6143-00-P7	24 - 5	B92-F8385-00	27 - 12	55D-H334E-01	30 - 12	90109-068A3	27 - 7	90201-16817	12 - 36	90520-10825	7 - 33
BF4-F6143-00-P8	24 - 5	BF4-F8391-80	27 - 30	1VP-H3358-00	31 - 3	90109-068B4	15 - 2	90201-220J8	23 - 17	90560-10292	21 - 2
BF4-F6145-00	24 - 8	BF4-F8391-90	27 - 30	55D-H3358-00	30 - 7		15 - 4	90206-14093	23 - 13	91312-05016	35 - 16
B92-F6240-00	24 - 11	BF4-F8391-A0	27 - 30		30 - 14		20 - 6	90208-12808	12 - 33	91312-06012	4 - 6
1VP-F6241-00	24 - 12	BF4-F8391-B0	27 - 30	2BR-H3371-00	36 - 12	90109-068B5	26 - 10	90249-12008	24 - 26	91312-06025	25 - 11
B92-F6246-00	24 - 13	BF4-F8392-80	27 - 31	BF4-H3509-00	31 - 6	90110-06846	7 - 16	90269-06816	19 - 16	91332-05010	19 - 11
B92-F6257-00	24 - 21	BF4-F8392-90	27 - 31	BF4-H3510-00	31 - 1	90110-06868	1 - 19	90280-03017	2 - 9	91332-06020	28 - 3
	26 - 17	BF4-F8392-A0	27 - 31	BF4-H3511-00	31 - 2	90111-06811	8 - 3	90340-12816	9 - 12		28 - 4
	24 - 14	BF4-F8392-B0	27 - 31	5LW-H3518-00	31 - 5	90111-06865	27 - 11	90380-10803	12 - 27		29 - 6
2WB-F6280-00	24 - 27	BF4-F8393-80	27 - 32	2BR-H3550-00	31 - 9	90111-08853	22 - 2	90380-15811	11 - 8		34 - 12
5P2-F6281-00	24 - 28	BF4-F8393-90	27 - 32	54P-H3591-00	36 - 7	90116-08843	9 - 11	90387-05820	16 - 19	91332-06025	11 - 13
5P2-F6282-00	24 - 28	BF4-F8393-A0	27 - 32	1VP-H3606-00	31 - 7	90119-06155	19 - 4	90387-064W3	7 - 31	91401-25015	26 - 24
2WB-F6290-00	24 - 15	BF4-F8393-B0	27 - 32	1VP-H3645-00	31 - 4	90149-05801	1 - 10	90387-08820	26 - 14		26 - 32
BF4-F6301-00	24 - 16	2PH-H1410-10	28 - 2	5TL-H3912-20	34 - 7	90149-06309	35 - 7	90387-10837	21 - 7	91701-08035	26 - 23
1VB-F6351-00	24 - 19	2PH-H1450-20	28 - 1	5TL-H3922-00	34 - 13	90159-06810	16 - 21	90388-08803	9 - 4		26 - 31
B92-F637G-00	24 - 20	1KP-H1617-00	29 - 3	1S8-H3955-01	34 - 2	90170-05803	3 - 9	90388-10800	14 - 4	91A20-07065	19 - 15
B92-F7111-00	26 - 1	2SX-H1828-00	29 - 5	1KP-H3973-10	34 - 1	90170-12800	12 - 34	90388-10805	9 - 5	92012-05008	35 - 4
2PH-F7112-00	26 - 2	2SX-H1830-00	29 - 4	1KP-H3976-10	34 - 5	90170-12803	12 - 29	90401-10015	25 - 2	92012-05010	24 - 18
2PH-F7114-00	14 - 6	1KP-H1847-00	29 - 2	54P-H3980-00	34 - 16	90179-06411	24 - 25	90430-06803	1 - 5	92012-05016	24 - 17
1GC-F7121-00	9 - 3	2SX-H1890-00	29 - 1	5TL-H3980-10	34 - 10	90179-12004	28 - 6		9 - 15	93102-15801	11 - 11
54P-F7121-00	9 - 3	2PH-H1940-01	35 - 14	1VP-H4147-00	32 - 4	90179-25002	18 - 30	90430-10806	36 - 8	93102-19814	9 - 22
5LW-F7254-00	26 - 5	2BL-H1960-00	35 - 12	BF4-H4300-00	32 - 1	90183-05807	15 - 6	90430-12803	9 - 13	93102-19817	9 - 22
B92-F7267-00	26 - 6	55D-H2100-00	35 - 1	1VP-H4314-00	32 - 2		16 - 7	90450-46803	7 - 34	93102-20815	13 - 12
B92-F7311-00	26 - 12	2CB-H2100-01	35 - 1	BF4-H4516-00	33 - 5		16 - 10	90464-07805	35 - 17	93102-20816	13 - 12
B92-F7430-00	26 - 18	BF4-H2115-00	35 - 2	BF4-H4710-00	33 - 1		16 - 14	90464-12810	36 - 4	93102-25816	9 - 29
B92-F7431-00	26 - 19	BF4-H2116-00	35 - 18	1VP-H4714-00	33 - 2		16 - 18	90464-16006	35 - 11	93102-25819	9 - 29
B92-F7432-00	26 - 20	5D9-H2126-00	19 - 14	BF4-H4716-00	33 - 6		20 - 7	90464-16807	36 - 10	93102-32801	13 - 6
B92-F7440-00	26 - 26	BF4-H2129-00	20 - 8	BF4-H4721-00	33 - 4		24 - 2	90464-34002	35 - 10	93102-32809	13 - 6
B92-F7441-00	26 - 27	1VP-H2151-00	35 - 3	BF4-H4723-00	33 - 3		24 - 6	90467-110A3	10 - 5	93106-20808	21 - 3
B92-F7442-00	26 - 28	1VB-H2176-00	20 - 20	2FC-H5111-00	36 - 15		24 - 9	90467-11825	9 - 8	93210-07802	23 - 6
BF4-F7481-00	26 - 7	2PH-H2310-00	36 - 3	55D-H5130-00	36 - 14		26 - 9	90467-12807	7 - 28	93210-09806	4 - 2
1VB-F8100-00	20 - 21	2PH-H2370-10	36 - 6	2PH-H5546-00	36 - 2		27 - 2	90467-13808	7 - 37	93210-148H8	9 - 17
B92-F8257-00	27 - 9	1LB-H2566-01	35 - 15	2PH-H5752-00	19 - 8		27 - 5	90467-13858	7 - 38	93210-16805	12 - 31
BF4-F8300-00	27 - 8	BF4-H2590-00	35 - 8	2PH-H5885-00	7 - 18		27 - 15	90480-13013	7 - 32	93210-29800	6 - 7
BF4-F8311-00	27 - 4	5TL-H2911-20	34 - 6	2SX-H591A-00	36 - 1		27 - 18	90501-12743	26 - 21	93210-29803	29 - 7
BF4-F8345-00	27 - 17	55D-H3311-00	30 - 2	2DP-H592A-20	36 - 9		27 - 24		26 - 29	93210-35883	7 - 4
BF4-F8346-00	27 - 23		30 - 9	5P0-W0041-00	25 - 5			90501-16003	24 - 24	93211-07800	9 - 23
BF4-F8356-00	14 - 11		32 - 3	4C9-W0048-00	22 - 8	90185-05803	36 - 16	90501-16004	6 - 6	93211-47801	9 - 30
BF4-F835U-00-P0	27 - 21	1VP-H3318-00	30 - 15	1VB-XH250-01	35 - 5	90185-10011	24 - 4	90506-12001	23 - 8	93306-001X9	4 - 3
BF4-F835U-00-P5	27 - 21	55D-H3323-00	30 - 4	90101-06046	23 - 14	90185-16800	23 - 15	90506-15001	23 - 9	93306-001YE	4 - 3
BF4-F835U-00-P6	27 - 21	55D-H332M-00	30 - 11	90101-08847	26 - 13	90201-10065	17 - 5	90506-20514	26 - 16	93306-201YK	13 - 10
BF4-F835V-00-P0	27 - 27	55D-H3330-01	30 - 1	90105-07801	4 - 7	90201-10118	25 - 3	90506-35821	26 - 4	93306-201YR	13 - 10
BF4-F835V-00-P5	27 - 27	55D-H3333-00	30 - 6	90105-088H4	17 - 2	90201-10831	14 - 10	90508-32768	11 - 7	93306-204XT	13 - 11
BF4-F835V-00-P6	27 - 27		30 - 13	90105-10831	22 - 13	90201-12028	17 - 4	90520-03806	20 - 9	93306-204XV	13 - 11

NUMERICAL INDEX

PART NO.	REF. NO.	PART NO.	REF. NO.	PART NO.	REF. NO.	PART NO.	REF. NO.	PART NO.	REF. NO.	PART NO.	REF. NO.
93306-252YB	12 - 26	95E32-06012	35 - 9	9870M-03008	34 - 11						
93306-272YA	13 - 5	95E32-06014	24 - 23	99002-09600	26 - 3						
93306-300X8	21 - 4	95E32-06020	4 - 15	99009-15400	11 - 10						
93306-303YN	13 - 8		5 - 8	99009-25400	13 - 7						
93306-303YS	13 - 8		9 - 27	99009-35700	12 - 28						
93306-351Y5	13 - 2		10 - 21	99480-05010	9 - 25						
93306-372X5	2 - 7		36 - 5	99530-10114	1 - 17						
93310-528YP	2 - 3	95E32-06025	9 - 32		1 - 18						
93440-10153	1 - 3		35 - 13		9 - 9						
93450-14088	2 - 12	95E32-06035	9 - 33		9 - 31						
93501-04823	26 - 22		9 - 37		9 - 36						
	26 - 30		10 - 10		10 - 9						
93900-00817	21 - 6	95E32-06040	24 - 22								
	23 - 3	95E32-06045	10 - 20								
94107-14807	21 - 5	95E32-06060	9 - 10								
94108-14809	23 - 2	95E32-06070	9 - 26								
94568-J7092	4 - 9	97602-05208	35 - 6								
94700-00372	1 - 15	97602-05216	34 - 3								
95302-08600	1 - 14	97702-03012	33 - 7								
95302-10600	17 - 3	97702-50014	16 - 4								
95602-06100	34 - 9		16 - 12								
	34 - 15		16 - 16								
95602-08200	26 - 15		27 - 3								
95602-10200	14 - 9		27 - 26								
	21 - 9		32 - 5								
95612-08618	1 - 6	97702-60530	5 - 9								
95702-08500	8 - 5	97707-50012	20 - 10								
95702-10500	23 - 5		33 - 8								
95812-06040	9 - 14	97707-50014	27 - 20								
95D02-06010	14 - 12	97707-50016	16 - 2								
	18 - 32		16 - 6								
	18 - 34		16 - 9								
	18 - 36		16 - 13								
	36 - 13		16 - 17								
95D02-08030	26 - 25		24 - 7								
	26 - 33		24 - 10								
95D32-06016	5 - 11		26 - 11								
95D32-06020	10 - 17		27 - 6								
	20 - 18		27 - 13								
95D32-06025	7 - 15		27 - 16								
	7 - 35		27 - 22								
95D32-06035	7 - 6		27 - 28								
95D32-06045	7 - 7		31 - 8								
95D32-06090	10 - 18		34 - 4								
95D32-08055	8 - 6	97707-50025	7 - 29								
95E32-06010	1 - 4	98502-05020	6 - 3								
	10 - 8	98502-05025	24 - 29								
	20 - 13	98507-05010	20 - 16								